



ARTISTE

DaVINCI

User Manual

©2023 ELATION PROFESSIONAL all rights reserved. Information, specifications, diagrams, images, and instructions herein are subject to change without notice. ELATION PROFESSIONAL logo and identifying product names and numbers herein are trademarks of ELATION PROFESSIONAL. Copyright protection claimed includes all forms and matters of copyrightable materials and information now allowed by statutory or judicial law or hereinafter granted. Product names used in this document may be trademarks or registered trademarks of their respective companies and are hereby acknowledged. All non-ELATION brands and product names are trademarks or registered trademarks of their respective companies.

ELATION PROFESSIONAL and all affiliated companies hereby disclaim any and all liabilities for property, equipment, building, and electrical damages, injuries to any persons, and direct or indirect economic loss associated with the use or reliance of any information contained within this document, and/or as a result of the improper, unsafe, insufficient and negligent assembly, installation, rigging, and operation of this product.

Elation Professional USA | 6122 S. Eastern Ave. | Los Angeles, CA. 90040
323-582-3322 | 323-832-9142 fax | www.elationlighting.com | info@elationlighting.com

Elation Professional B.V. | Junostraat 2 | 6468 EW Kerkrade, The Netherlands
+31 45 546 85 66 | +31 45 546 85 96 fax | www.elationlighting.eu | info@elationlighting.eu

Elation Professional Mexico
AV Santa Ana 30 | Parque Industrial Lerma, Lerma, Mexico 52000
+52 (728) 282-7070



DOCUMENT VERSION

Due to additional product features and/or enhancements, an updated version of this document may be available online.
Please check www.elationlighting.com for the latest revision/update of this manual before beginning installation and/or programming.

Date	Document Version	Software Version	DMX Channels	Notes
02/09/2017	1.0	1.2.0	26/28/40	Initial release
02/20/2017	1.2	1.2.1	No change	Updated Service Setting and Fans Control menu items; updated dimensional drawings; added Color & Gobo section
02/22/2017	1.3	N/C	No change	Added E-Fly Wireless DMX section
09/20/2017	1.4	1.2.4	No change	Added ArtNet 4 support, Silent Fan Mode, USB Software Update; multiple System Menu edits
12/03/2018	1.6	N/C	No change	Updated release
10/06/2020	1.8	N/C	No change	Updated specifications
11/24/2020	2.0	1.2.10	No change	Updated primary/secondary modes
04/20/2022	2.1	N/C	No change	Updated General Information, added RDM.
08/09/2022	2.2	N/C	No change	Updated pan/tilt angles
04/11/2023	2.3	1.4.0	No change	Added Fan Modes, Dimmer Curves, Software Updates; updated Installation Guidelines, System Menu, DMX Traits, Specifications, Dimensional Drawings

TABLE OF CONTENTS

General Information	4
Limited Warranty	5
Safety Precautions	6
Maintenance Guidelines	8
Overview	9
Installation Guidelines	10
E-Fly Wireless DMX Set Up	14
Remote Device Management (RDM)	16
System Menu	17
Record Controller	23
Fan Control and Low Noise Operation	25
DMX Traits	26
Colors and Gobos	32
Dimmer Curves	33
Error Codes	34
Software Updates	36
Specifications	40
Dimensional Drawings	41
FCC Statement	42

GENERAL INFORMATION

INTRODUCTION

Please read and understand the instructions in this manual carefully and thoroughly before attempting to operate this device. These instructions contain important safety and use information. **This device is intended for use by trained personnel only, and is not suitable for private use.**

UNPACKING

Every device has been thoroughly tested and has been shipped in perfect operating condition. Carefully check the shipping carton for damage that may have occurred during shipping. If the carton is damaged, carefully inspect the device for damage, and be sure all accessories necessary to install and operate the device have arrived intact. In the event that damage has been found or parts are missing, please contact our customer support team for further instructions. Please do not return this device to your dealer without first contacting customer support. Please do not discard the shipping carton in the trash. Please recycle whenever possible.

BOX CONTENTS

Power Cable (x1)
Omega Brackets (x2)

CUSTOMER SUPPORT

Contact ELATION Service for any product related service and support needs. Also visit forums.elationlighting.com with questions, comments or suggestions.

ELATION SERVICE USA - Monday - Friday 8:00am to 4:30pm PST
323-582-3322 | Fax 323-832-9142 | support@elationlighting.com

ELATION SERVICE EUROPE - Monday - Friday 08:30 to 17:00 CET
+31 45 546 85 63 | Fax +31 45 546 85 96 | support@elationlighting.eu

REPLACEMENT PARTS - please visit parts.elationlighting.com

IMPORTANT NOTICE!



There are no user serviceable parts inside this unit. Do not attempt any repairs yourself, as doing so will void your manufacturer's warranty. Damages resulting from modifications to this fixture and/or the disregard of safety instructions and guidelines in this manual void the manufacturer's warranty and are not subject to any warranty claims and/or repairs.

LIMITED WARRANTY

- A. Elation Professional hereby warrants, to the original purchaser, Elation Professional products to be free of manufacturing defects in material and workmanship for a period of two years (730 days), and Elation Professional product rechargeable batteries to be free of manufacturing defects in material and workmanship for a period of six months (180 days), from the original date of purchase. This warranty excludes discharge lamps and all product accessories. This warranty shall be valid only if the product is purchased within the United States of America, including possessions and territories. It is the owner's responsibility to establish the date and place of purchase by acceptable evidence, at the time service is sought.
- B. For warranty service, send the product only to the Elation Professional factory. All shipping charges must be pre-paid. If the requested repairs or service (including parts replacement) are within the terms of this warranty, Elation Professional will pay return shipping charges only to a designated point within the United States. If any product is sent, it must be shipped in its original package and packaging material. No accessories should be shipped with the product. If any accessories are shipped with the product, Elation Professional shall have no liability what so ever for loss and/or damage to any such accessories, nor for the safe return thereof.
- C. This warranty is void if the product serial number and/or labels are altered or removed; if the product is modified in any manner which Elation Professional concludes, after inspection, affects the reliability of the product; if the product has been repaired or serviced by anyone other than the Elation Professional factory unless prior written authorization was issued to purchaser by Elation Professional; if the product is damaged because not properly maintained as set forth in the product instructions, guidelines and/or user manual.
- D. This is not a service contract, and this warranty does not include any maintenance, cleaning or periodic check-up. During the periods as specified above, Elation Professional will replace defective parts at its expense, and will absorb all expenses for warranty service and repair labor by reason of defects in material or workmanship. The sole responsibility of Elation Professional under this warranty shall be limited to the repair of the product, or replacement thereof, including parts, at the sole discretion of Elation Professional. All products covered by this warranty were manufactured after January 1, 1990, and bare identifying marks to that effect.
- E. Elation Professional reserves the right to make changes in design and/or performance improvements upon its products without any obligation to include these changes in any products theretofore manufactured.
- F. No warranty, whether expressed or implied, is given or made with respect to any accessory supplied with the products described above. Except to the extent prohibited by applicable law, all implied warranties made by Elation Professional in connection with this product, including warranties of merchantability or fitness, are limited in duration to the warranty periods set forth above. And no warranties, whether expressed or implied, including warranties of merchantability or fitness, shall apply to this product after said periods have expired. The consumer's and/or dealer's sole remedy shall be such repair or replacement as is expressly provided above; and under no circumstances shall Elation Professional be liable for any loss and/or damage, direct and/or consequential, arising out of the use of, and/or the inability to use, this product.
- G. This warranty is the only written warranty applicable to Elation Professional products and supersedes all prior warranties and written descriptions of warranty terms and conditions heretofore published.

WARRANTY RETURNS

All returned service items whether under warranty or not, must be freight pre-paid and accompany a return authorization (R.A.) number. The R.A. number must be clearly written on the outside of the return package. A brief description of the problem as well as the R.A. number must also be written down on a piece of paper and included in the shipping container. If the unit is under warranty, you must provide a copy of your proof of purchase invoice. Items returned without a R.A. number clearly marked on the outside of the package will be refused and returned at customer's expense. You may obtain a R.A. number by contacting customer support.

SAFETY PRECAUTIONS

This fixture is a sophisticated piece of electronic equipment. To guarantee a smooth operation, it is important to follow all instructions and guidelines in this manual. Elation Professional is not responsible for injuries and/or damages resulting from the misuse of this fixture due to the disregard of the information printed in this manual. Only qualified and/or certified personnel should perform installation of this fixture and only the original rigging parts included with this fixture should be used for installation. Any modifications to the fixture and/or the included mounting hardware will void the original manufacturer's warranty and increase the risk of damage and/or personal injury



PROTECTION CLASS 1 - FIXTURE MUST BE PROPERLY GROUNDED.



THERE ARE NO USER SERVICEABLE PARTS INSIDE THIS UNIT. DO NOT ATTEMPT ANY REPAIRS YOURSELF, AS DOING SO WILL VOID YOUR MANUFACTURER'S WARRANTY. DAMAGES RESULTING FROM MODIFICATIONS TO THIS FIXTURE AND/OR THE DISREGARD OF SAFETY INSTRUCTIONS AND GUIDELINES IN THIS MANUAL VOID THE MANUFACTURER'S WARRANTY AND ARE NOT SUBJECT TO ANY WARRANTY CLAIMS AND/OR REPAIRS.



DO NOT PLUG FIXTURE INTO A DIMMER PACK!

NEVER OPEN THIS FIXTURE WHILE IN USE!

UNPLUG POWER BEFORE SERVICING FIXTURE!

NEVER TOUCH FIXTURE DURING OPERATION, AS IT MAY BE HOT! KEEP FLAMMABLE MATERIALS AWAY FROM FIXTURE!



NEVER LOOK DIRECTLY INTO THE LIGHT SOURCE!

RETINA INJURY RISK - MAY INDUCE BLINDNESS!

SENSITIVE PERSONS MAY SUFFER AN EPILEPTIC SHOCK!



FOR USE IN INDOOR/DRY LOCATIONS ONLY!

DO NOT EXPOSE TO RAIN AND/OR MOISTURE!



MINIMUM DISTANCE TO OBJECTS/SURFACES IS 5 FEET (1.5 METERS)

MAXIMUM TEMP OF EXTERNAL SURFACE 185° F (85°C)

SAFETY PRECAUTIONS

- DO NOT TOUCH the fixture housing during operation. Turn OFF the power and allow approximately 15 minutes for the fixture to cool down before servicing.
- DO NOT shake fixture, and avoid using brute force when installing and/or operating the fixture.
- DO NOT operate the fixture if the power cord is frayed, crimped, damaged, and/or if any of the power cord connectors are damaged and do not plug into the fixture securely with ease.
- NEVER force a power cord connector into the fixture. If the power cord or any of its connectors are damaged, replace it immediately with a new one of the same power rating.
- DO NOT block any air ventilation slots.
- All fan and air inlets must remain clean and never blocked.
- Leave approx. 6" (15cm) between the fixture and other devices or a wall in order to allow for proper cooling.
- When installing in a suspended environment, always use mounting hardware that is no less than M10x25mm, and always install fixture with an appropriately rated safety cable.
- Always disconnect the fixture from the main power source before performing any type of service and/or cleaning procedure.
- Only handle the power cord by the plug end. Never pull out the plug by tugging on the wire portion of the cord.
- During the initial operation of this fixture, a light smoke or smell may emit from the interior of the fixture. This is a normal process and is caused by excess paint in the interior of the casing burning off from the heat associated with the lamp. This will decrease gradually over time.
- Consistent operational breaks will ensure fixture will function properly for many years.

MAINTENANCE GUIDELINES



DISCONNECT POWER BEFORE PERFORMING ANY MAINTENANCE!

CLEANING

Frequent cleaning is recommended to ensure proper function, optimized light output, and an extended life. The frequency of cleaning depends on the environment in which the fixture operates: damp, smoky or particularly dirty environments can cause greater accumulation of dirt on the fixture's optics. Periodically clean the external lens surface with a soft cloth to avoid dirt/debris accumulation.

NEVER use alcohol, solvents, or ammonia-based cleaners.

MAINTENANCE

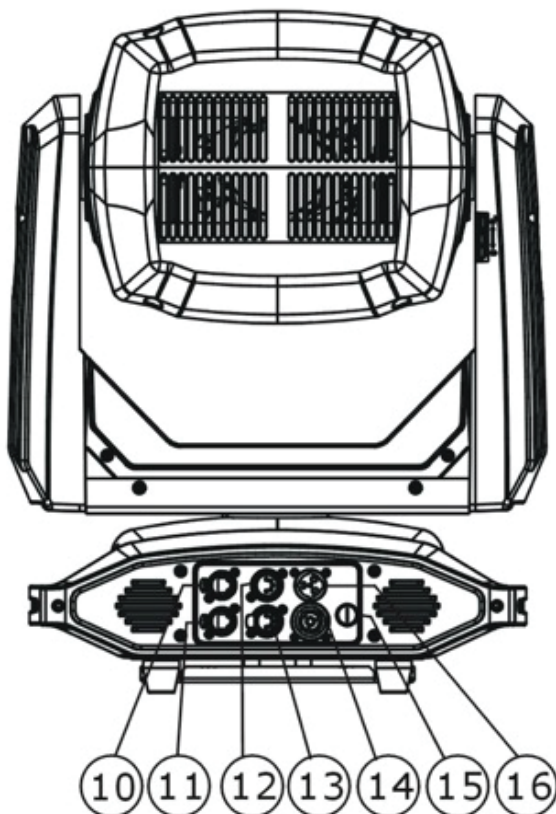
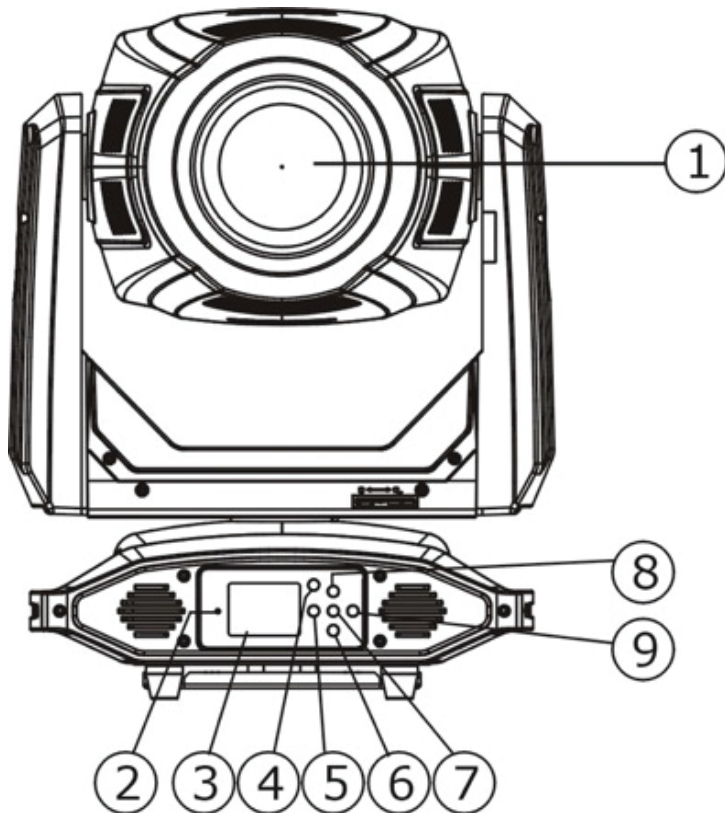
Regular inspections are recommended to insure proper function and extended life. There are no user serviceable parts inside this fixture. Please refer all other service issues to an authorized Elation service technician. Should you need any spare parts, please order genuine parts from your local Elation dealer.

Please refer to the following points during routine inspections:

- A detailed electric check by an approved electrical engineer every three months, to make sure the circuit contacts are in good condition and prevent overheating.
- Be sure all screws and fasteners are securely tightened at all times. Loose screws may fall out during normal operation, resulting in damage or injury as larger parts could fall.
- Check for any deformations on the housing, color lenses, rigging hardware, and rigging points (ceiling, suspension, trussing). Deformations in the housing could allow for dust to enter into the fixture. Damaged rigging points or unsecured rigging could cause the fixture to fall and seriously injure a person(s).
- Electric power supply cables must not show any damage, material fatigue or sediments.

NEVER remove the ground prong from the power cable.

OVERVIEW



1. LED Lens Array
2. Wireless Indicator
3. LCD Menu Function Display
4. MODE/ESC Button
5. LEFT Button
6. DOWN Button
7. ENTER Button
8. UP Button
9. RIGHT Button
10. RJ45 Ethernet IN
11. RJ45 Ethernet OUT
12. 5pin DMX IN
13. 5pin DMX OUT
14. Power OUT
15. Fuse
16. Power IN

INSTALLATION GUIDELINES



FLAMMABLE MATERIAL WARNING

Keep fixture minimum 5.0 feet (1.5m) away from flammable materials and/or pyrotechnics.



ELECTRICAL CONNECTIONS

A qualified electrician should be used for all electrical connections and/or installations.



MINIMUM DISTANCE TO SURFACES/OBJECTS IS 5.0 FEET (1.5 METER).

MINIMUM DISTANCE TO FLAMMABLE MATERIALS IS 1.6 FEET (0.5 METER).

EXTERNAL SURFACE CAN REACH TEMPERATURES OF 185° F (85° C).



DO NOT INSTALL THE FIXTURE IF YOU ARE NOT QUALIFIED TO DO SO!

Fixture **MUST** be installed following all local, national, and country commercial electrical and construction codes and regulations.

Before rigging/mounting a single fixture or multiple fixtures to any metal truss/structure or placing the fixture(s) on any surface, a professional equipment installer **MUST** be consulted to determine if the metal truss/structure or surface is properly certified to safely hold the combined weight of the fixture(s), clamps, cables, and accessories.

Overhead rigging requires extensive experience, including calculating working load limits, installation material being used, and periodic safety inspection of all installation material and the fixture, among other skills. If you lack these qualifications, do not attempt the installation yourself. Improper installation can result in bodily injury.

Fixture ambient operating temperature range is **14° to 113°F (-10° to 45°C)**. Do not operate the fixture when the ambient temperature falls outside of this range.

Fixture(s) should be installed away from walking paths, seating areas, or areas where unauthorized personnel might reach the fixture by hand.

NEVER stand directly below the fixture(s) when rigging, removing, or servicing.

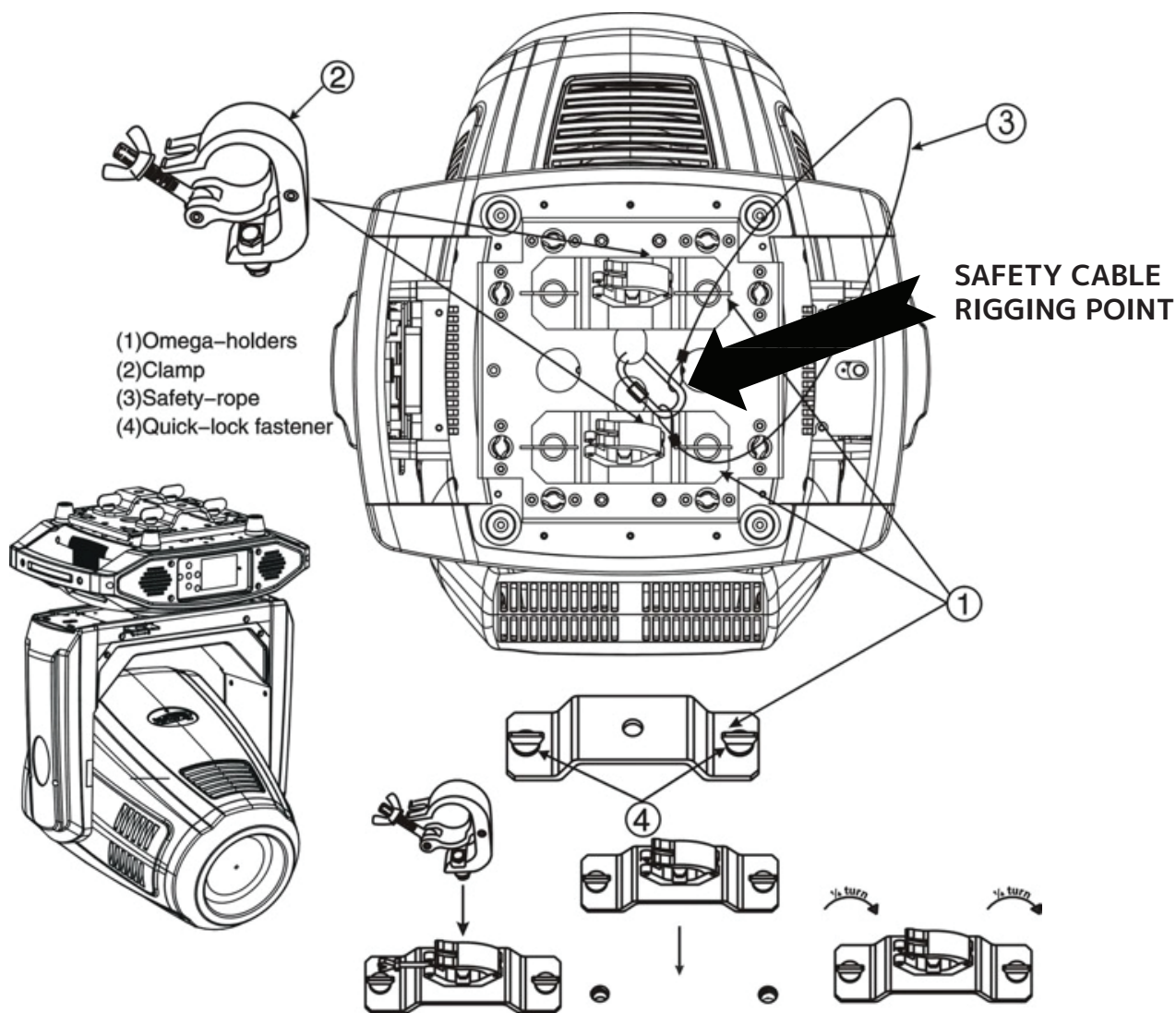
Overhead fixture installation must always be secured with a secondary safety attachment, such as an appropriately rated safety cable.

Allow approximately 15 minutes for the fixture to cool down before servicing.

INSTALLATION GUIDELINES

OMEGA BRACKET INSTALLATION

Insert the Omega Brackets into the matching holes on the bottom of the fixture. Secure the Omega Brackets to the fixture by turning each quick-lock fastener $\frac{1}{4}$ turn clockwise; making sure the fastener is completely locked.

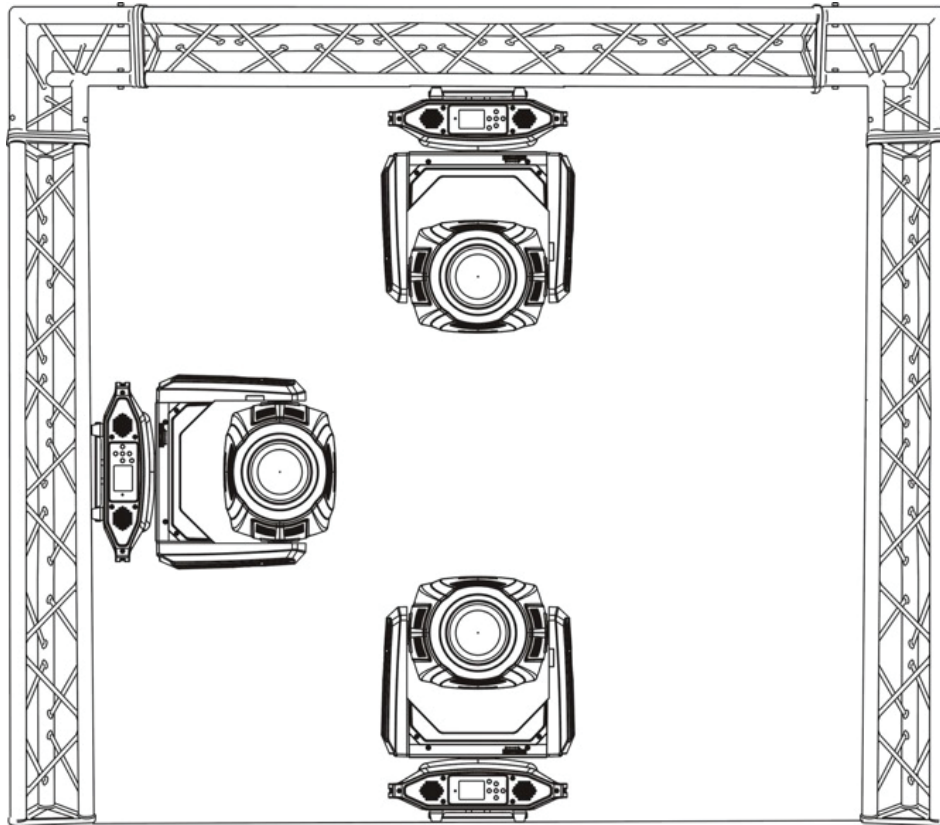


CLAMP INSTALLATION

When mounting fixture to truss, be sure to secure an appropriately rated professional grade rigging clamp to the included Omega Brackets using an M10 screw fitted through the center hole of the Omega Brackets. The fixture also features a built-in rigging point for a SAFETY CABLE. Be sure to only use the designated rigging point for the safety cable and never secure a safety cable to a carrying handle.

INSTALLATION GUIDELINES

CAUTION: Falling fixtures can cause severe injury or serious equipment damage! For this reason, fixtures should be installed and inspected only by qualified personnel. Do not install the unit if you lack the qualifications to do so, or if you have doubts about the safety and security of the installation setup or location!



SAFETY CABLE:

ALWAYS ATTACH A SAFETY CABLE WHENEVER INSTALLING THIS FIXTURE IN A SUSPENDED ENVIRONMENT TO ENSURE THAT THE FIXTURE WILL NOT FALL IF THE CLAMP FAILS. ONLY USE DESIGNATED RIGGING POINTS FOR SAFETY CABLE, AND NEVER ATTACH A SAFETY CABLE TO A CARRYING HANDLE.

ART-NET CONNECTION

When connecting fixture to a network switch to control multiple devices, a Gigabit Ethernet Switch that supports IGMP (Internet Group Management Protocol) is required. Using a Gigabit Ethernet Switch that does not support IGMP can cause erratic behavior of all connected devices to the switch. Click link below for more information about IGMP.

https://en.wikipedia.org/wiki/Internet_Group_Management_Protocol

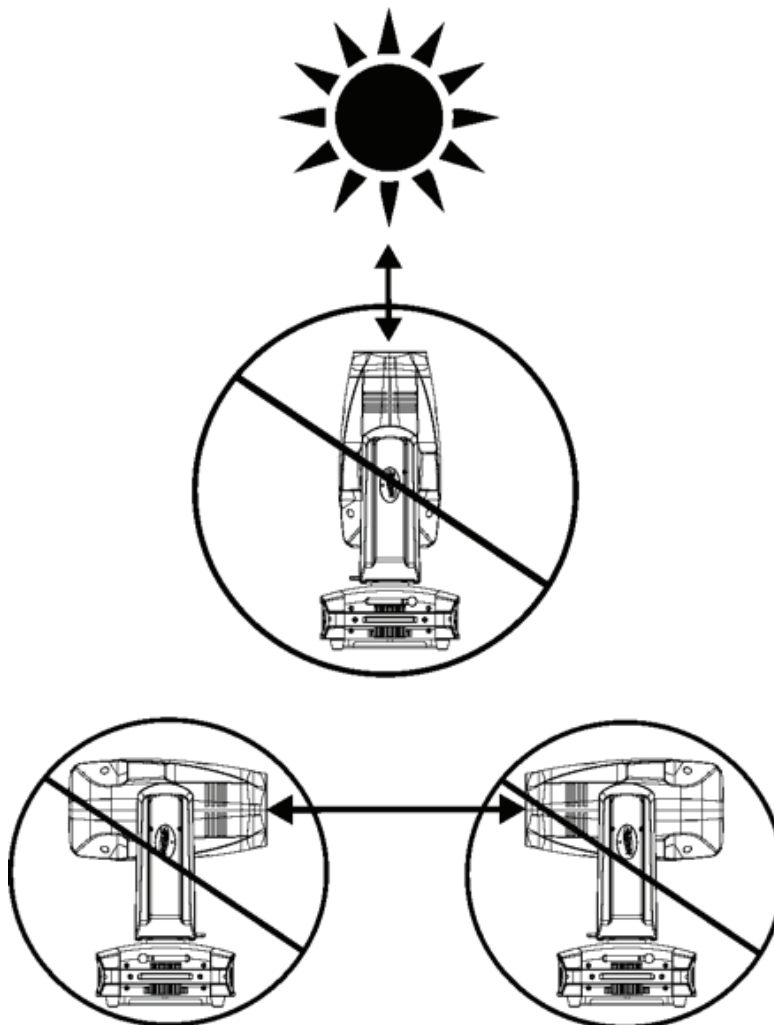
INSTALLATION GUIDELINES

POTENTIAL INTERNAL FIXTURE DAMAGE FROM EXTERNAL SOURCES OF LIGHT BEAMS

External sources of light beams from direct sunlight, lighting and moving head fixtures, and lasers, which are focused directly towards the exterior housing and/or penetrate the front lens opening of Elation lighting fixtures, can cause severe internal damage including burning of optics, dichroic color filters, glass and metal gobos, prisms, animation wheels, frost filters, iris, shutters, motors, belts, wiring, discharge lamps, and LEDs.

This issue is not specific only to Elation lighting fixtures, but rather it is a common issue with lighting fixtures from all manufacturers. Although there is no true way to fully prevent this issue from happening, the guidelines below can reduce the risk of potential damage. Contact Elation Service for more details.

DO NOT EXPOSE THE FIXTURE AND/OR FRONT LENS OPENING TO LIGHT BEAMS FROM DIRECT SUNLIGHT, OTHER LIGHTING OR MOVING HEAD FIXTURES, AND LASERS DURING UNPACKING, INSTALLATION, USE, AND EXTENDED IDLE TIMES OUTDOORS. DO NOT FOCUS A LIGHT BEAM FROM ONE LIGHTING FIXTURE DIRECTLY TOWARDS ANOTHER.



E-FLY WIRELESS DMX SET UP



BEFORE SETTING THE WIRELESS CHANNEL ON ANY E-FLY FIXTURE, MAKE SURE THE SOURCE WIRELESS DMX TRANSCEIVER DEVICE IS OFF.

TO CONTROL FIXTURE WITH E-FLY WIRELESS DMX SIGNAL, FOLLOW THE STEPS BELOW:

1. Ensure the source E-FLY wireless DMX Transceiver device is powered OFF.
2. Power ON fixture and use the LCD control panel to select DMX & E-FLY or E-FLY & OUT in the Select Signal sub menu of the PERSONALITY main system menu.
3. From the LCD control panel, navigate to PERSONALITY > SET E-FLY CHN. Set the E-FLY wireless channel to the same wireless channel as the source E-FLY DMX Transceiver device.
NOTE: Erratic fixture movement may occur if other E-FLY wireless DMX products are in use in the same area and are using the same E-FLY wireless channel. The fixture may immediately start to respond to the DMX wireless signal from another E-FLY wireless DMX Transceiver when E-FLY is enabled. Make sure to confirm if any E-FLY wireless channels are being used in the area where the fixture is being installed. ELATION E-FLY WIRELESS TRANSCEIVER only has 0-14 wireless channels, NO CH 15.
4. Navigate to FUNCTION > SET DMX ADDRESS in the system menu, and select the desired DMX address for this fixture.
5. The E-FLY signal Indicator on the fixture LCD control display will illuminate GREEN if a successful wireless DMX connection has been made, or illuminate RED for NO connection. If no connection is made, repeat steps 1-4 above.
6. Repeat this process for all E-FLY compatible fixtures in the E-FLY wireless network, making sure all fixtures are assigned the same E-FLY wireless channel.
7. After all fixtures in the E-FLY wireless network have been set to the same E-FLY wireless channel and powered ON, switch ON power to the source E-FLY DMX Transceiver device.
8. Test all fixtures connected to the E-FLY wireless network to confirm proper functionality.

E-FLY WIRELESS DMX SET UP

WIRELESS E-FLY INSTALLATION LOCATION GUIDELINES

Wireless DMX signal can penetrate walls, glass, metal, and most objects. However, there are many factors that can affect and/or interrupt the wireless DMX signal, one of which is the presence of people. Therefore, it is highly recommended to position the wireless antenna a minimum of 9.8 ft. (3m) above audiences and/or above ground level. Careful planning and testing of the selected installation location is critical to ensure optimum and reliable wireless DMX operation.

**9.8 ft (3m)
Above Ground**



REMOTE DEVICE MANAGEMENT (RDM)

NOTE: In order for RDM to work properly, RDM enabled equipment must be used throughout the entire system, including DMX data splitters and wireless systems.

Remote Device Management (RDM) is a protocol that sits on top of the DMX512 data standard for lighting, allowing the DMX systems of the fixtures to be modified and monitored remotely. This protocol is ideal for instances in which a unit is installed in a location that is not easily accessible.

With RDM, the DMX512 system becomes bi-directional, allowing a compatible RDM enabled controller to send out a signal to devices on the wire, as well as allowing the fixture to respond (known as a GET command). The controller can then use its SET command to modify settings that would typically have to be changed or viewed directly via the unit's display screen, including the DMX Address, DMX Channel Mode, and Temperature Sensors.

FIXTURE RDM INFORMATION:

RDM Code	Device ID	Device Model ID	Personality ID
0x58E	Open	1422	Open

Please be aware that not all RDM devices support all RDM features, and therefore it is important to check beforehand to ensure that the equipment that you are considering includes all of the features that you require.

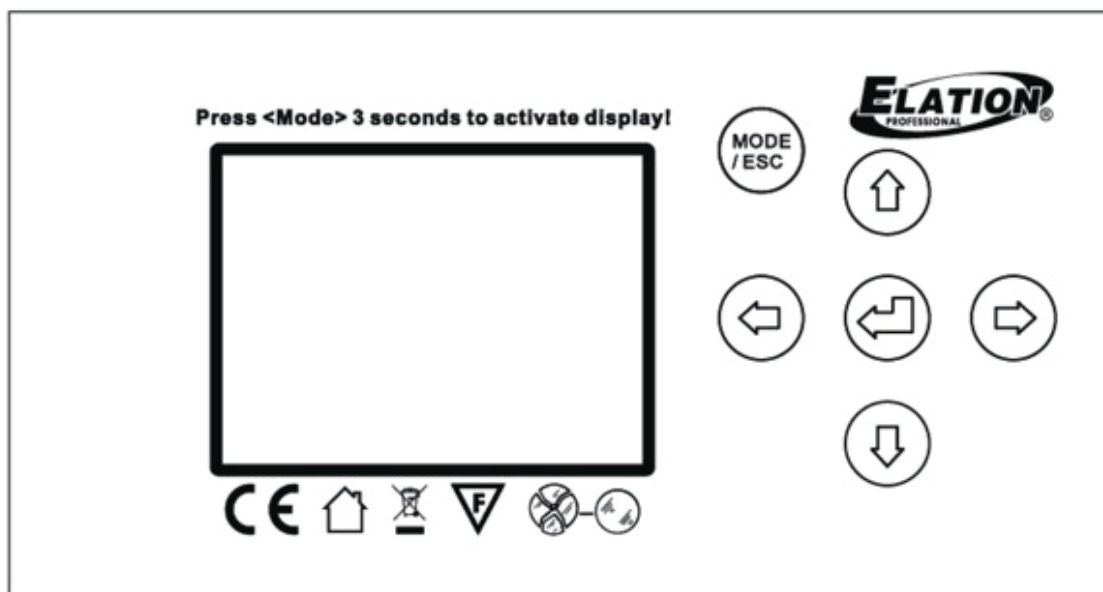
The following parameters are accessible in RDM on this device:

Sensor Definition
Sensor Value
Device Model Description
Manufacturer Label
Device Label
DMX Personality
DMX Personality Description
Device Hours
Pan Invert
Tilt Invert
Display Invert

SYSTEM MENU

The fixture includes an easy to navigate system menu. The control panel (see image below) located on the front of the fixture, provides access to the main system menu and is where all necessary system adjustments are made to the fixture. During normal operation, pressing MODE/ESC button once will access the fixture's main menu. Once in the main menu you can navigate through the different functions and access the sub-menus with the UP, DOWN, RIGHT, and LEFT buttons. Once you reach a field that requires adjusting, press the ENTER button to activate that field and use the UP and DOWN buttons to adjust the field. Pressing the ENTER button once more will confirm your setting. You may exit the main menu at any time without making any adjustments by pressing the MODE/ESC button.

To access the LCD Menu Control Display via the internal battery, press and hold the MODE/ESC button for 3 seconds. The LCD Menu Control Display will shut OFF automatically about 1 minute from the last button press.



SYSTEM MENU

ELATION ARTISTE DAVINCI SYSTEM MENU				
Supports Software Versions: ≥ 1.4.0				
Features subject to change without notice. Rotation direction (clockwise/counter-clockwise) and control of effects depend on head orientation and pan/tilt settings. Default settings listed in bold .				
MAIN MENU	SUB MENU	OPTIONS / VALUES		DESCRIPTION
FUNCTION	Set DMX Address	A001 - Axxx		Set DMX starting address
	DMX Value	Pan, ...		Display current value of selected DMX channel
	Secondary Mode	Secondary1		Select secondary mode
		Secondary2		
		Secondary3		
Auto Program	Primary / Alone		Run auto program	
INFORMATION	Time Information	Current Time	xxxx Hours	Fixture run time from power ON
		Total Run Time	xxxx Hours	Fixture total run time
		Last Run Time	xxxx Hours	Run time since last reset
		Last Run Password	Password = 038	Password required
		Clear Last Run	On / Off	Reset Last Run Time
	Temperature Info	Head Temperature	xxx °C / °F	Display current head temp
		Base Temperature	xxx °C / °F	Display current base temp
	Ethernet IP	Ethernet IP xxx.xxx.xxx.xxx xxx.xxx.xxx.xxx		Ethernet IP address
	Fan Info	HeadFan1 ...	xxxx RPM ...	Display current speed for each fan
	Software Version	Vx.x.x		Display current software version
	Error Info	Error Record 1 - 10		Display last 10 errors one by one
PERSONALITY	Status Settings	Address Via DMX	On / Off	Set address via DMX condole
		No DMX Status	Close	Fixture state when DMX signal is lost
			Hold	
			Auto	
		Pan Reverse	On / Off	Reverse pan motion
		Tilt Reverse	On / Off	Reverse tilt motion
		Pan Degree	630 / 540	Pan angle selection
		Feedback	On / Off	Activate/deactivate feedback
		Hibernation	Off, 10min-99min	Stand by mode, default = 15min
CONTINUED ON NEXT PAGE				

SYSTEM MENU

Supports Software Versions: $\geq 1.4.0$				
MAIN MENU	SUB MENU	OPTIONS / VALUES		DESCRIPTION
PERSONALITY (continued)	Service Setting	Password = 050		Password for service settings
		Clear Err Info	On / Off	Clear error messages
		DFLT Pow EFly On	On / Off	E-Fly on by default when fixture is powered on
		USB Update	Yes / No	Activate USB port for software updates
	Fans Control	Auto		Select fan mode
		High		
		Silent		
	Display Settings	Shutoff Time	02min-60min	Screen shuts off after selected period of inactivity, default = 5min
		Display Reverse	Off	Invert display orientation
			On	
			Auto	
		Key Lock	On / Off	Key lock function
	Temperature C/F	Celsius / Fahrenheit		Select temperature units
	Initial Status	Pan = xxx ...		DMX value of each parameter when fixture is reset
	Select Signal	E-Fly Off		Disable E-Fly wireless transceiver
		DMX & E-Fly		Activate 5pin DMX and E-Fly
		E-Fly & Out		Activate E-Fly and 5pin DMX Out
		Art-Net		Select Art-Net
		sACN		Activate sACN
		DMX In & E-Fly Out		DMX input, E-Fly output
	Ethernet IP	xxx.xxx.xxx.xxx		Ethernet IP address
	Ether Mask IP	xxx.xxx.xxx.xxx		Ethernet mask IP address
	Set Universe	0 - 32767		Set Art-Net universe
	DHCP	On / Off		Automatically assign IP address
	Set E-Fly Chn	00 - 14		Select E-Fly channel
	Dimmer Mode	Standard		Select dimmer mode
		Stage		
		TV		
		Architectural		
		Theatre		
	Refresh	900Hz - 1500Hz, 2500Hz, 4000Hz, 5000Hz, 10KHz, 15KHz, 20KHz, 25KHz		Select LED refresh frequency rate, default = 1200Hz
	Gamma	2.0, 2.2 , 2.4, 2.6, 2.8		Select gamma value
	Reset Default	On / Off	Passcode = 011	Reset to factory default settings
CONTINUED ON NEXT PAGE				

SYSTEM MENU

Supports Software Versions: ≥ 1.4.0				
MAIN MENU	SUB MENU	OPTIONS / VALUES		DESCRIPTION
RESET FUNCTION	Reset All		Reset all motors	
	Reset Pan & Tilt		Reset pan and tilt motors	
	Reset Colors		Reset color wheel motors	
	Reset Gobos		Reset gobo wheel	
	Reset Others		Reset other motors	
EFFECT ADJUST	Test Channel	Pan, ...		Test channel
	Manual Control	Pan = xxx ...		Manual adjustment
	Calibration	Calibrate Password = 050		Channel data calibration
		Pan = xxx ...		
USER MODE SET	User Mode	Basic Mode		Select channel mode
		Standard Mode		
		Extended Mode		
		User Mode A		Select user edited channel mode
		User Mode B		
	User Mode C			
	Edit User Mode	Max Channel = xx Pan = Ch01 ...		Edit user edited channel mode
EDIT PROGRAM	Select Programs	Auto Pro Part 1 = Program 1 ~ 10 (Program 1)		Select automated program to run
		Auto Pro Part 2 = Program 1 ~ 10 (Program 2)		
		Auto Pro Part 3 = Program 1 ~ 10 (Program 3)		
	Edit Programs	Program 1 ~ 10	Program Test	Test run program
			Step 01 = SCxxx	Program start scene
			Step 64 = SCxxx	Program end scene
	Edit Scenes	Edit Scene 001 ~ 250	Pan, Tilt, ...	Manual operation scene input
			-- Fade Time --	Modify fade time manually
			-- Scene Time --	Modify scene time manually
			Input by Out	Input from external console
Rec Controller	xx ~ xx		Automatically record scenes	

SYSTEM MENU

PERSONALITY - Status Settings - Address Via DMX

When enabled, allows the user to define the desired DMX address via an external controller.

NOTE: This explanation below assumes the fixture DMX address is set to 001. If fixture DMX address is not at 001, you must adjust the channel numbers accordingly in order for this feature to work. For example: if your fixture address is 010, then Channel 1 becomes Channel 10, Channel 2 becomes Channel 11, and Channel 3 becomes Channel 12.

1. Connect the fixture to the external controller and power ON.
2. Set the DMX value of Channel 1 on the controller to (7).
3. Set the DMX value of Channel 2 on the controller to (7) or (8). When set to (7), the DMX address can be set between (1) and (255). When set to (8), the DMX address can be set between (256) and (511).
4. Using Channel 3 on the controller set the desired DMX address of the fixture. For example: If the desired DMX address is 57, set Channel 1 to a value of (7), set Channel 2 to a value of (7), and then set Channel 3 to a value of (57).
5. After setting Channel 3 to the desired DMX address value, wait for approximately 20 seconds (some fixtures may require a longer time) for the fixture to complete the address reset function.

PERSONALITY – Service Setting - Password (050)

The Service Password MUST be entered in order to access the following menus: RDM PID, Ethernet IP, Ethernet IP Mask, and Clear Err. Info.

PERSONALITY – Service Setting - RDM PID

Select various submenus via RDM. RDM stands for “Remote Device Management”, which provides the ability to control the device remotely while connected to a DMX-bus. ANSI E1.20-2006 by ESTA specifies the RDM standard as an extension of the DMX512 protocol. Manual settings, such as adjusting the DMX starting address, are no longer needed. This is especially useful when the device is installed in a remote area.

RDM ready and conventional DMX devices can be operated in one DMX line. The RDM protocol sends its own packages in the DMX512 data feed and does not influence conventional devices. If DMX splitters are used and RDM control is to be used, these splitters must support RDM. The number and type of RDM parameters depend on the RDM controller being used.

PERSONALITY - Display Setting – Key Lock

When ON, Control Panel buttons lock automatically after exiting main menu for 15 seconds. To unlock, keep MODE/ESC button pressed for 3 seconds.

PERSONALITY - Select Signal – Art-Net on IP2/IP10 (AVAILABLE ONLY IN SOFTWARE v1.20 & v1.21)

Fixture has 2 predefined IP addresses for Art-Net. Select Art-Net on IP2 for a unique 002 IP range address or Art-Net on IP10 for a unique 010 IP range address.

SYSTEM MENU

PERSONALITY - Reset Default (011)

CAUTION! ONLY QUALIFIED TECHNICIANS SHOULD PERFORM THIS FUNCTION. SAVED WHITE BALANCE IS ERASED AFTER A RESET IS PERFORMED.

This function restores all fixture settings to the factory default settings. The password is 011 and must be entered each time a reset is performed.

EFFECT ADJUST – Test Channel

Auto test each individual channel function independently from the DMX control board.

EFFECT ADJUST – Manual Control

Select and manually test and fine adjust each individual channel function independently from DMX control board. This function will center PAN and TILT motors and set dimmer to 100%. PAN and TILT functions will still operate if the fixture needs to be positioned to a flat clear surface. With the individual functions, you can focus the light on a flat surface (wall) and perform fine adjustments.

EFFECT ADJUST – Calibration

CAUTION! ONLY QUALIFIED TECHNICIANS SHOULD PERFORM THIS FUNCTION.

This function allows small adjustments to be made to the Pan, Tilt, and Zoom movements to compensate for wear, or in the event that a sensor has been knocked slightly out of place. Because improper use of this function can result in undesired operation, this function has been password protected. The password is 050 and must be entered each time the calibration menu function is entered. Because calibration is an extremely delicate procedure, instructions on performing this action are left out of this manual. **If you are a first-time calibrator, please contact our customer support team for step-by-step instructions.**

USER MODE SET – Edit User Mode

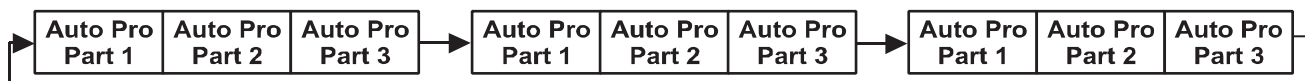
Create user defined channel orders allowing the fixture to match the channel order of other fixtures on the market for easier operation. A total of three user modes may be configured: User Mode A, User Mode B, and User Mode C.

RECORD CONTROLLER

The fixture features an integrated DMX recorder that can be used to transmit the programmed scenes from your DMX controller to the moving head. Adjust the desired scene numbers via the encoder (from – to). When you call up the scenes with your controller, they will automatically be transmitted to the moving head.

WORKING WITH BUILT-IN PROGRAMS

A Primary unit can send up to 3 different data groups to the Secondary units. In other words, a Primary unit can operate up to 3 different Secondary units, with each Secondary unit operating a different set of programs. The Primary unit sends the 3 program parts in a continuous loop.



The Secondary unit receives data from the Primary unit according to the group that the Secondary unit was assigned to. For example, suppose we have a unit that has been assigned as a “Secondary 1” unit. Upon receiving the 3-part Auto Program from the Primary unit, the Secondary 1 unit will implement Part 1 of the Auto Program, while ignoring Part 2 and Part 3.

To start running an Auto Program, follow the directions below:

- 1. Set the Secondary unit(s) to the desired Secondary group.** In the main menu of any unit that you want to set as a Secondary, navigate to Function > Secondary Mode. Select “Secondary 1”, “Secondary 2”, or “Secondary 3” to designate the desired Secondary group. Press ENTER to confirm, and press MODE/ESC to return to the main menu,
- 2. Set the Primary unit.** In the Main Menu of the unit you want to set as the Primary, navigate to Function > Auto Program. Select “Primary” and press ENTER to confirm. Then press MODE/ESC to return to the main menu.
- 3. Program selection for each part of the Auto Program.** In the main menu of the Primary unit, navigate to Edit Program > Select Programs. Select “Auto Pro Part 1”, then select which program (1 - 10) to set as Part 1. Press ENTER to confirm. Repeat the process for “Auto Pro Part 2” and “Auto Pro Part 3”.
- 4. Program selection for edit program.** In the main menu of the Primary unit, navigate to Edit Program > Edit Program, then press ENTER. Select the desired program to edit specific scenes into a specific program, then press ENTER to confirm.
- 5. Automatic Scene Recording.** In the main menu of the Primary unit, navigate to Edit Program > Edit Scenes, then press ENTER. Select the desired scene numbers, noting that a maximum of 250 scenes can be programmed. Press ENTER to confirm.

See the following page for an example.

RECORD CONTROLLER

EXAMPLE: WORKING WITH BUILT-IN PROGRAMS

Program 2 includes scenes: 10, 11, 12, & 13

Program 4 includes scenes: 8, 9, & 10

Program 6 includes scenes: 12, 13, 14, & 15

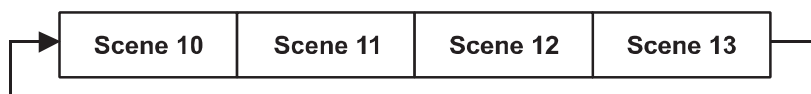
Auto Pro Part 1 is Program 2

Auto Pro Part 2 is Program 3

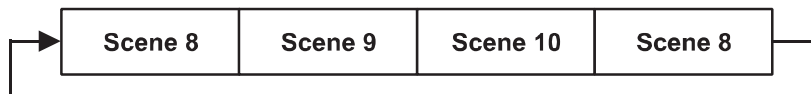
Auto Pro Part 3 is Program 6

The 3 Secondary groups run the Auto Program in certain time segments, as illustrated in the diagram below.

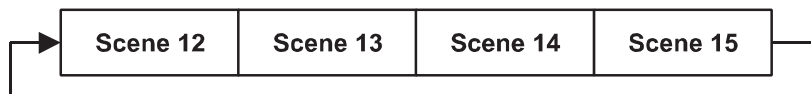
Part 1:



Part 2:



Part 3:



FAN CONTROL AND LOW NOISE OPERATION

The Artiste DaVinci is a high-performance fixture suited for multiple applications. For noise critical environments such as Theater, Opera, or Orchestral Halls, it offers various fan operation modes which remove unwanted noise distractions for the audience and performers. Fan Modes can be changed remotely via the DMX control channel, allowing the fixture to offer high output or whisper-silent operation at a moment's notice. All Fan Modes smoothly transition over a brief period, preventing unwanted attraction to the fixture.

Auto (Default) – Fans only run at the speeds needed to keep the LED engine within a safe temperature range, and ensures optimal performance of the fixture. They will turn off if possible; for example, when the fixture is dimmed to a low intensity. Fans sense the ambient and fixture temperature and will, at all times, try to keep noise levels at a minimum. The fixture output will only be reduced when the LED engine cannot be cooled to its safe operating range due to a high ambient temperature.

NOTE: This mode is recommended for daily operation.

Silent – Fan speeds are reduced throughout the fixture for a lower noise profile. The fixture output is also reduced to approximately 80%. This mode should be sufficient for most uses where lower noise is required.

High – Fan speeds are increased throughout the fixture for the most efficient cooling. This mode will increase wear on the fans and should only be utilized in exceptional circumstances. Fans will always run, even if the fixture is dimmed. Fixture output is kept at 100% unless the LED engine temperature reaches an unsafe temperature, at which point the fixture will reduce power carefully to ensure continued safe operation. This mode is only required in very high ambient temperatures when automatic fan speed adjustments are not desired.

DMX TRAITS

ELATION ARTISTE DAVINCI DMX Channel Traits				
Supports Software Versions: 1.4.0				
Features subject to change without notice. Rotation direction (clockwise/counter-clockwise) and control of effects depends on head orientation and pan/tilt settings.				
CHANNEL			DMX VALUES	FUNCTION
BASIC	STANDARD	EXTENDED		
1	1	1	000 - 255	Pan Movement
	2	2	000 - 255	Pan Fine Movement
2	3	3	000 - 255	Tilt Movement
	4	4	000 - 255	Tilt Fine Movement
3	5	5	000 - 255	Cyan, 0% to 100%
		6	000 - 255	Cyan Fine
4	6	7	000 - 255	Magenta, 0% to 100%
		8	000 - 255	Magenta Fine
5	7	9	000 - 255	Yellow, 0% to 100%
		10	000 - 255	Yellow Fine
6	8	11	000 - 255	CTO, 0% to 100%
		12	000 - 255	CTO Fine
7	9	13		Color Wheel
			000 - 015	Open / white
			016 - 031	Red
			032 - 047	Blue
			048 - 063	Green
			064 - 079	Light Yellow
			080 - 095	Half Minus Green
			096 - 111	CTB
			112 - 127	Violet
			128 - 189	Forwards rainbow effect, fast to slow
			190 - 193	No rotation
			194 - 255	Backwards rainbow effect, slow to fast
		14	000 - 255	Color Wheel Fine
8	10	15		Rotating Gobos, continuous rotation
			000 - 009	Open
			010 - 019	Rotating Gobo 1
			020 - 029	Rotating Gobo 2
			030 - 039	Rotating Gobo 3
			040 - 049	Rotating Gobo 4
			050 - 059	Rotating Gobo 5
			060 - 069	Rotating Gobo 6
			070 - 089	Gobo 1 Shake, slow to fast
			090 - 109	Gobo 2 Shake, slow to fast
			110 - 129	Gobo 3 Shake, slow to fast
			130 - 149	Gobo 4 Shake, slow to fast

CONTINUED ON NEXT PAGE

DMX TRAITS

CHANNEL			DMX VALUES	FUNCTION
BASIC	STANDARD	EXTENDED		
8	10	15		Rotating Gobos , continuous rotation (continued)
			150 - 169	Gobo 5 Shake, slow to fast
			170 - 189	Gobo 6 Shake, slow to fast
			190 - 221	Gobo wheel rotation forward, fast to slow
			222 - 223	No rotation
			224 - 255	Gobo wheel rotation reverse, slow to fast
9	11	16		Rotating Gobo Index , rotating gobo rotation
			000 - 127	Gobo indexing
			128 - 189	Forwards gobo rotation, fast to slow
			190 - 193	No rotation
			194 - 255	Backwards gobo rotation, slow to fast
		17	000 - 255	Rotating Gobo Indexing Fine
10	12	18		Fixed Gobos
			000 - 009	Open
			010 - 019	Gobo 1
			020 - 029	Gobo 2
			030 - 039	Gobo 3
			040 - 049	Gobo 4
			050 - 059	Gobo 5
			060 - 069	Gobo 6
			070 - 079	Gobo 7
			080 - 089	Gobo 8
			090 - 099	Gobo 9
			100 - 109	Gobo 1 Shake, slow to fast
			110 - 119	Gobo 2 Shake, slow to fast
			120 - 129	Gobo 3 Shake, slow to fast
			130 - 139	Gobo 4 Shake, slow to fast
			140 - 149	Gobo 5 Shake, slow to fast
			150 - 159	Gobo 6 Shake, slow to fast
			160 - 169	Gobo 7 Shake, slow to fast
			170 - 179	Gobo 8 Shake, slow to fast
			180 - 189	Gobo 9 Shake, slow to fast
			190 - 221	Gobo wheel rotation forward, fast to slow
			222 - 223	No rotation
			224 - 255	Gobo wheel rotation backward, slow to fast
		19	000 - 255	Fixed Gobo Indexing Fine

CONTINUED ON NEXT PAGE

DMX TRAITS

CHANNEL			DMX VALUES	FUNCTION
BASIC	STANDARD	EXTENDED		
11	13	20		Rotating Prism, Prism/Gobo Macros
			000 - 031	Open
			032 - 079	3 Prism
			080 - 127	Linear Prism
			128 - 135	Macro 1
			136 - 143	Macro 2
			144 - 151	Macro 3
			152 - 159	Macro 4
			160 - 167	Macro 5
			168 - 175	Macro 6
			176 - 183	Macro 7
			184 - 191	Macro 8
			192 - 199	Macro 9
			200 - 207	Macro 10
			208 - 215	Macro 11
			216 - 223	Macro 12
			224 - 231	Macro 13
			232 - 239	Macro 14
			240 - 247	Macro 15
			248 - 255	Macro 16
12	14	21		Rotating Prism Index, rotating prism rotation
			000 - 127	Prism indexing
			128 - 189	Forward prism rotation, fast to slow
			190 - 193	No rotation
			194 - 255	Backward prism rotation, slow to fast
		22	000 - 255	Rotating Prism Indexing Fine
13	15	23	000 - 255	Focus , continuous adjustment from far to near
		24	000 - 255	Focus Fine
14	16	25	000 - 255	Zoom , small to large
		26	000 - 255	Zoom Fine
15	17	27		Auto Focus
			000 - 050	Auto Focus Off
			051 - 150	7.5 m
			151 - 255	15 m
16	18	28	000 - 255	Auto Focus Fine

COTNINUED ON NEXT PAGE

DMX TRAITS

CHANNEL			DMX VALUES	FUNCTION
BASIC	STANDARD	EXTENDED		
17	19	29		Shutter/Strobe
			000 - 031	Shutter closed
			032 - 063	Shutter open
			064 - 095	Strobe effect, slow to fast
			096 - 127	Shutter open
			128 - 159	Pulse effect in sequences
			160 - 191	Shutter open
			192 - 223	Random strobe effect, slow to fast
			224 - 255	Shutter open
18	20	30	000 - 255	Dimmer Intensity , 0% to 100%
		31	000 - 255	Dimmer Fine
19	21	32		Dim Modes
			000 - 020	Standard
			021 - 040	Stage
			041 - 060	TV
			061 - 080	Architectural
			081 - 100	Theatre
			101 - 255	Default to unit setting
20	22	33		Iris
			000 - 191	Max diameter to min diameter
			192 - 223	Pulse closing, fast to slow
			224 - 255	Pulse opening, slow to fast
		34	000 - 255	Iris Fine
21	23	35	000 - 255	Frost , no frost to full frost
22	24	36		Animation Wheel
			000 - 007	Open
			008 - 127	Forward Rotation, fast to slow
			128 - 135	No Rotation
			136 - 255	Backward Rotation, slow to fast
23	25	37	000 - 255	CMY & Color Macro Speed , max to min
24	26	38		Color Macros
			000 - 031	Off
			032 - 039	Macro 1
			040 - 047	Macro 2
			048 - 055	Macro 3
			056 - 063	Macro 4
			064 - 071	Macro 5
			072 - 079	Macro 6
			080 - 087	Macro 7
			088 - 095	Macro 8
			096 - 103	Macro 9

CONTINUED ON NEXT PAGE

DMX TRAITS

CHANNEL			DMX VALUES	FUNCTION
BASIC	STANDARD	EXTENDED		
24	26	38		Color Macros (continued)
			104 - 111	Macro 10
			112 - 119	Macro 11
			120 - 127	Macro 12
			128 - 135	Macro 13
			136 - 143	Macro 14
			144 - 151	Macro 15
			152 - 159	Macro 16
			160 - 167	Macro 17
			168 - 175	Macro 18
			176 - 183	Macro 19
			184 - 191	Macro 20
			192 - 199	Macro 21
			200 - 207	Macro 22
			208 - 215	Macro 23
			226 - 223	Macro 24
			224 - 231	Macro 25
			232 - 239	Macro 26
			240 - 247	Macro 27
			248 - 255	Random CMY
25	27	39		Pan/Tilt Movement Speed
			000 - 225	Max to min
			226 - 235	Blackout by movement
			236 - 245	Blackout by all wheel changing
			246 - 255	No function
26	28	40		Lamp On/Off, Reset, & Internal Programs
			000 - 019	Color change normal
			020 - 029	Color change to any position
			030 - 039	Color & gobo change to any position
			040 - 079	No function
			080 - 084	All motor reset
			085 - 087	Scan motor reset
			088 - 090	Colors motor reset
			091 - 093	Gobo motor reset
			094 - 096	No function
			097 - 099	Other motor reset

CONTINUED ON NEXT PAGE

DMX TRAITS

CHANNEL			DMX VALUES	FUNCTION
BASIC	STANDARD	EXTENDED		
26	28	40		Lamp On/Off, Reset, & Internal Programs (continued)
			100 - 119	Internal Program 1
			120 - 139	Internal Program 2
			140 - 159	Internal Program 3
			160 - 179	Internal Program 4
			180 - 199	Internal Program 5
			200 - 219	Internal Program 6
			220 - 239	Internal Program 7
			240 - 255	No function

COLORS AND GOBOS

COLOR FLAGS



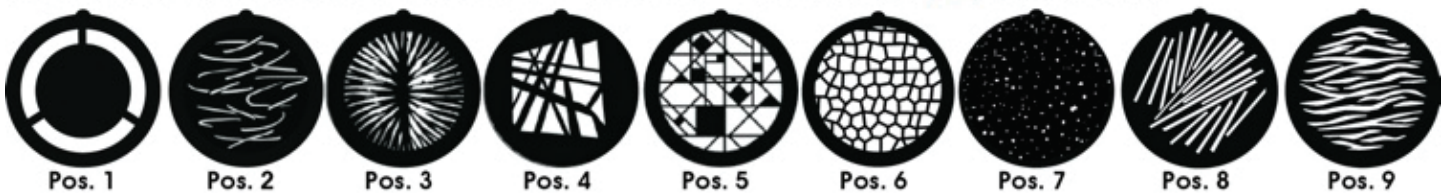
COLOR WHEEL



INTERCHANGEABLE-ROTATING GOBO WHEEL 1 - OD: Ø29.8mm** ID: Ø20.0mm



INTERCHANGEABLE STATIC-FIXED GOBO WHEEL 2 - OD: Ø25.8mm** ID: Ø22.0mm

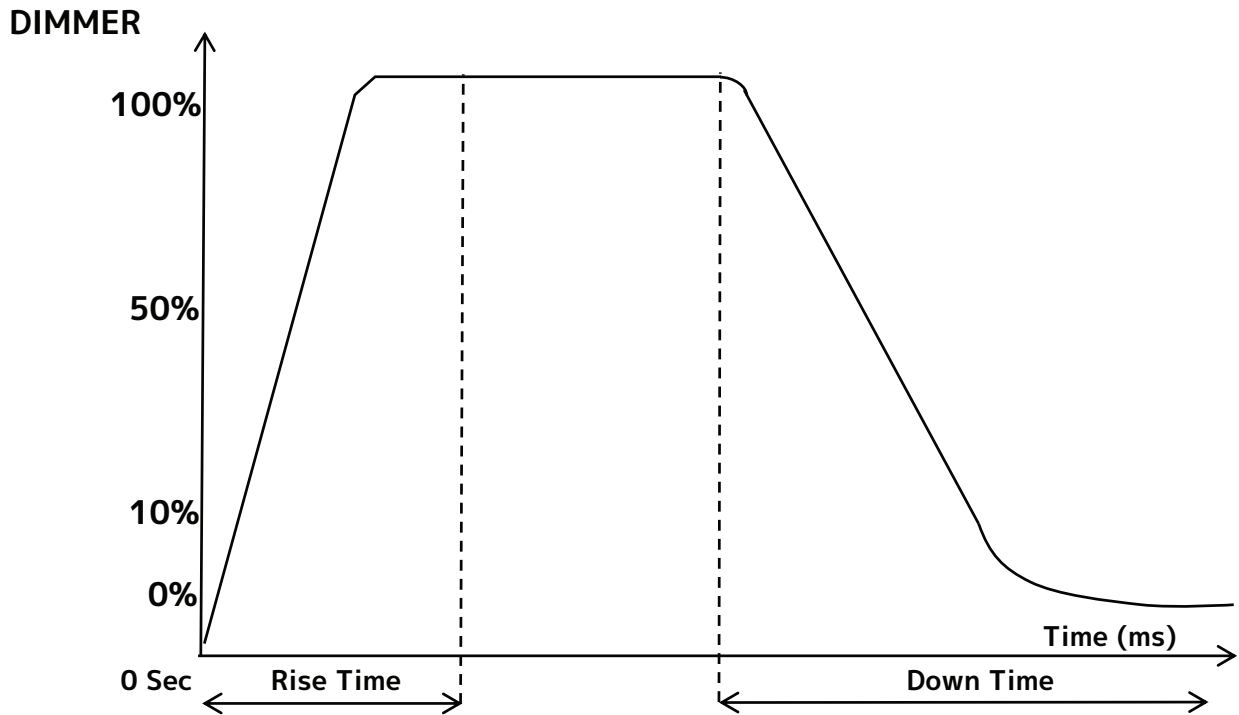


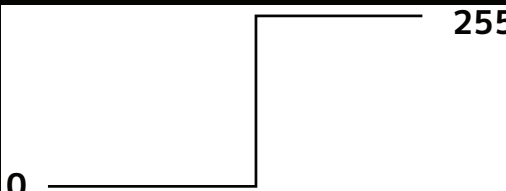
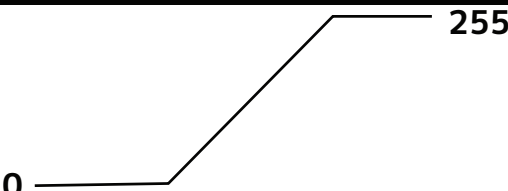
**IMPORTANT NOTICE REGARDING GOBO DIMENSIONS AND CUSTOM GOBOS

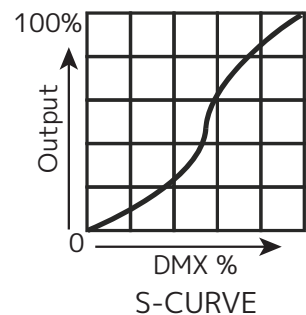
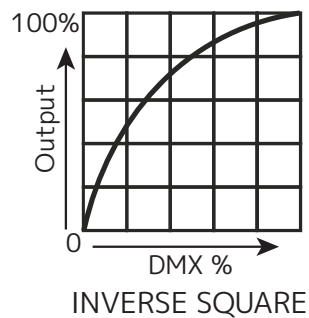
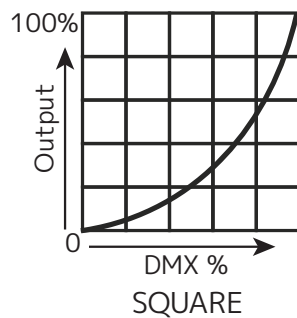
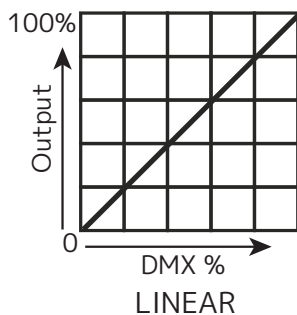
- OD = Outside Diameter
- ID = Image Diameter

Due to varying manufacturing processes, it is highly recommended to provide a gobo and holder sample from the fixture to 3rd party custom gobo vendors for accurate sizing.

DIMMER CURVES



Dimming Curve Ramp Effect	0 sec Fade Time		1 sec Fade Time	
				
	Rise Time (ms)	Down Time (ms)	Rise Time (ms)	Down Time (ms)
Standard (default)	0	0	0	0
Stage	780	1100	1540	1660
TV	1180	1520	1860	1940
Architectural	1380	1730	2040	2120
Theatre	1580	1940	2230	2280



ERROR CODES

When the unit is powered on, it will automatically enter a “Reset/Test” mode, which brings all the internal motors to a home position. If an internal problem with one or more of the motors is detected, an error code will flash in the display in the form of “XX Er” where XX will represent a code associated with the detected error. These codes are listed in the table accompanying this section.

For example, when the display shows “PAN Er” it means there is some type of error with the Pan motor. If there are multiple errors during the start-up process, they will all flash in the display. For example: if the fixtures has errors related to pan, tilt, and CMY all at the same time, you will see the error message “PAN Er”, “TILT Er”, and “CMY Er” flash and repeat 5 times.

If an error is detected during the initial start-up procedure, the fixture will self-generate a second reset signal and try to realign all the motors and correct the errors. If the error persists after a second attempt, a third attempt will be made. If after a third attempt all the errors have not been corrected the fixture will make the following determinations:

- **3 or More Errors:** The fixture cannot function properly with three or more errors, and therefore the fixture will place itself in stand-by mode until subsequent repairs can be made.
- **Less Than 3 Errors:** The fixture has less than 3 errors. Most other functions will work properly. The fixture will attempt to operate normally until the errors can be corrected by a technician. The errors in question will remain flashing in the display as a reminder of internal errors.

ERROR CODES

ERROR CODES	
Error codes are subject to change without any prior written notice.	
ERROR CODE	DESCRIPTION
PAN	The pan movement is not located in the default position after the reset.
TILT	The tilt movement is not located in the default position after the reset.
CMY	The CMY movement is not located in the default position after the reset.
CTO	The CTO movement is not located in the default position after the reset.
COLOR	The color movement is not located in the default position after the reset.
GOBO	Gobo wheel 1 movement is not located in the default position after the reset.
GOBO_R	Gobo wheel 1 rotation movement is not located in the default position after the reset.
GOBO2	Gobo wheel 2 movement is not located in the default position after the reset.
3_PRISM	The 3-prism wheel movement is not located in the default position after the reset.
3_Prism1Rot	The 3-prism rotation movement is not located in the default position after the reset.
Line_PRISM	The linear prism wheel movement is not located in the default position after the reset.
Line_Prism1Rot	The linear prism rotation movement is not located in the default position after the reset.
FOCUS	The focus movement is not located in the default position after the reset.
ZOOM	The zoom movement is not located in the default position after the reset.
IRIS	The iris movement is not located in the default position after the reset.
FROST	The frost movement is not located in the default position after the reset.
ANIMATION	The animation wheel movement is not located in the default position after the reset.
AnimationRot	The animation rotation movement is not located in the default position after the reset.

SOFTWARE UPDATES

Software update capability applies only to software versions 1.4.0 and higher.



ONLY QUALIFIED TECHNICIANS SHOULD PERFORM THIS FUNCTION!
NOTE ALL MENU SETTINGS BEFORE UPDATING SOFTWARE!
FIXTURE SOFTWARE CAN NOT BE DOWNGRADED!
DOWNLOAD FIXTURE SOFTWARE TO PC ONLY! (NO MAC SUPPORT)
PLEASE CONTACT ELATION SERVICE FOR FURTHER INFORMATION.

Software updates for this fixture can be performed using the **Elation Ethernet Updater**.
Contact Elation Service to obtain this updater device:

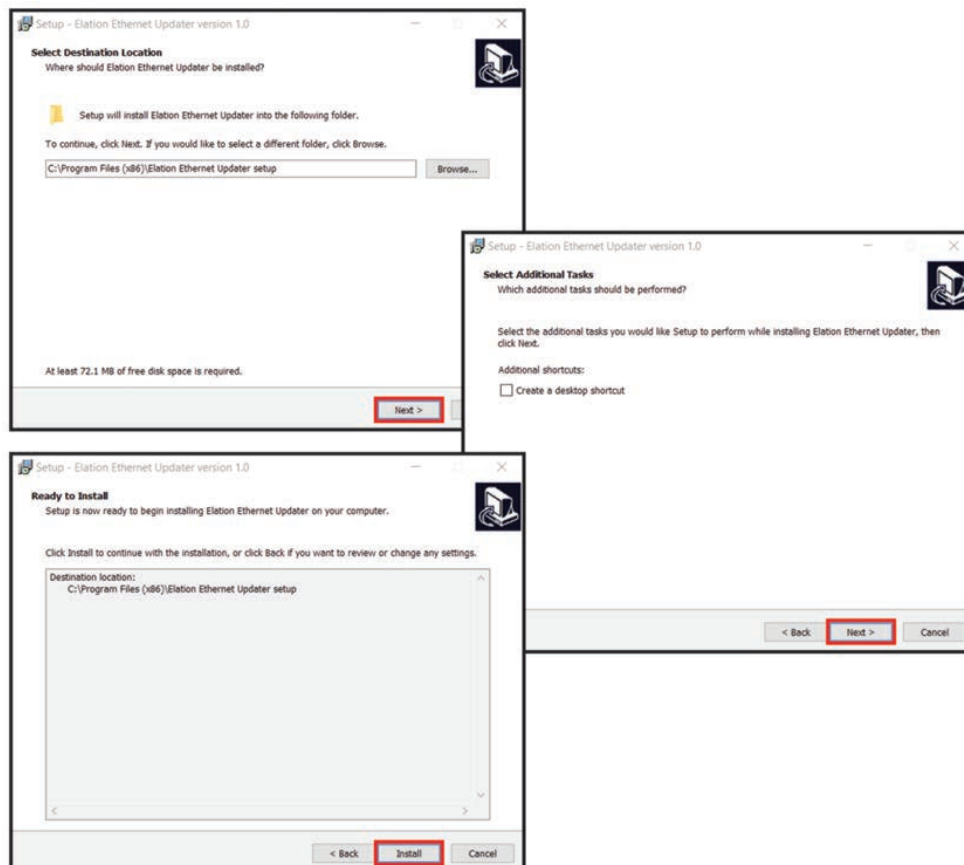
ELATION SERVICE USA - Monday - Friday 8:00am to 4:30pm PST
323-582-3322 | Fax 323-832-9142 | support@elationlighting.com

ELATION SERVICE EUROPE - Monday - Friday 08:30 to 17:00 CET
+31 45 546 85 63 | Fax +31 45 546 85 96 | support@elationlighting.eu

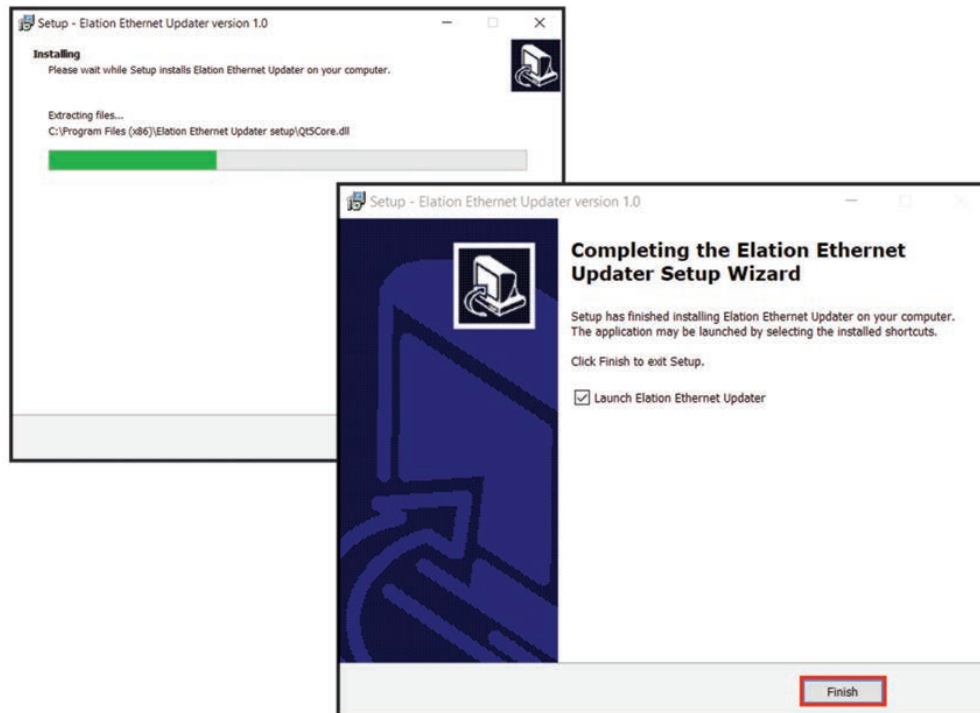
The Elation Ethernet Updater is an EXE file, which only works on a PC System. Once you've received the Elation Ethernet Updater RAR file from Elation Service via email, download and extract the EXE file. With the file extracted, click [Elation Ethernet Updater setupV100.exe](#) to launch the installation wizard.



Follow the prompts once the Elation Ethernet Updater EXE has launched the Setup Wizard.



SOFTWARE UPDATES

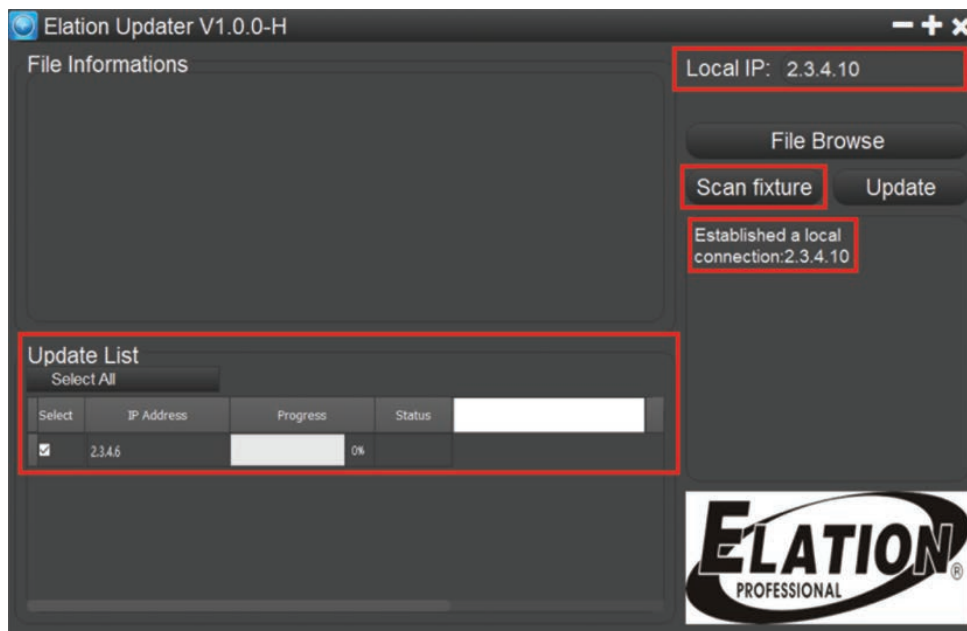


Once you have installed the Elation Ethernet Updater, it will launch automatically (unless you unchecked "Launch Elation Ethernet Updater"), or you can open it any time by clicking on the icon.

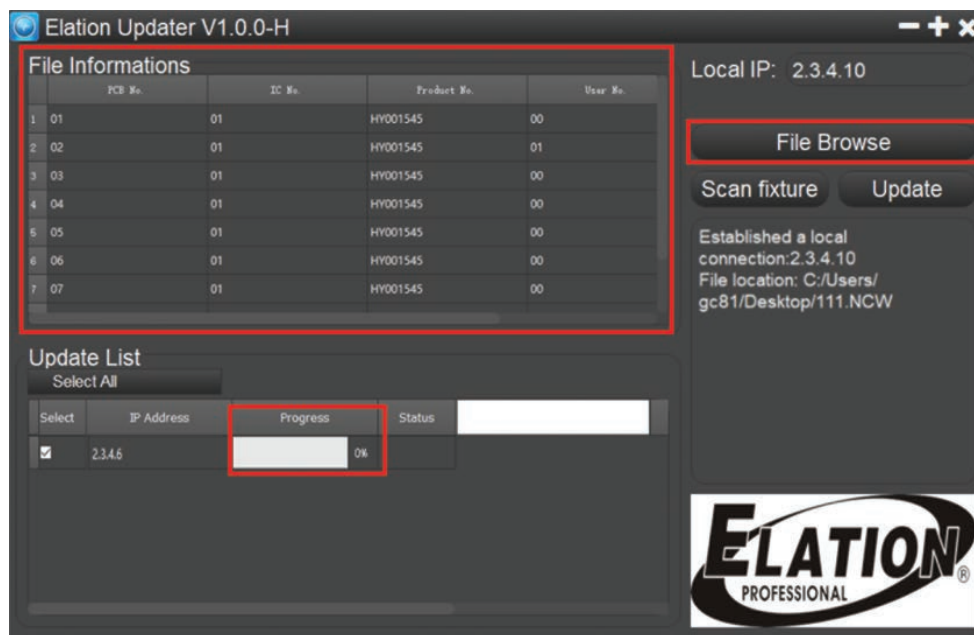


SOFTWARE UPDATES

Once opened, your local IP will automatically be identified. Click “Scan fixture” and create a connection. The fixture identity will appear in the Update List on the left side of browser. A connection will fail to establish if the fixture IP and Local IP are not in the same network segment.

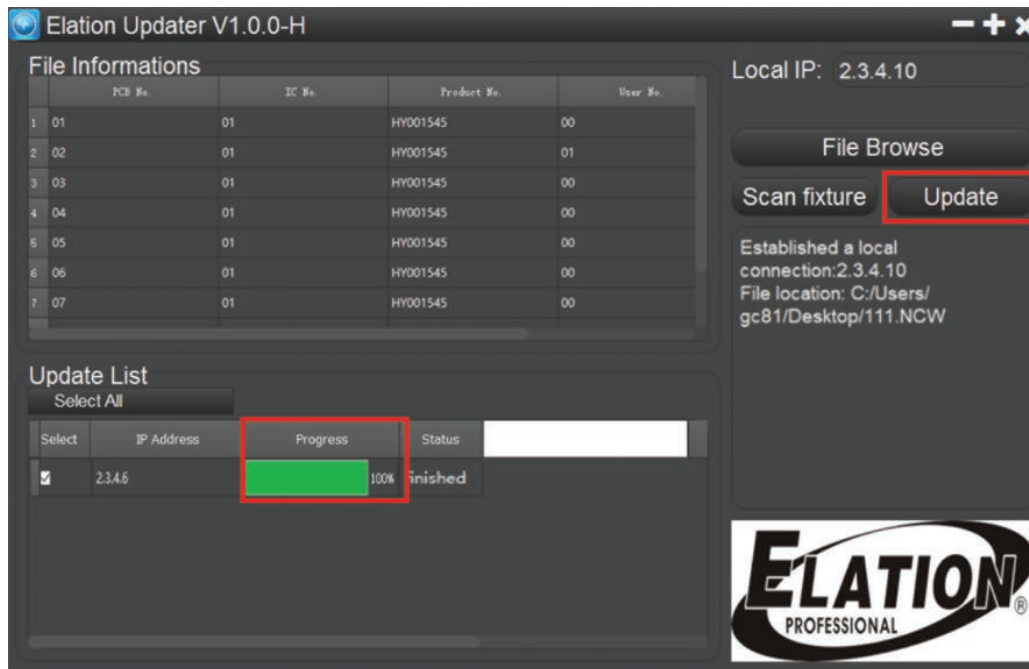


Click “File Browse” to select the files you want to download. The download Progress is displayed in the File information chart as a percentage bar graph.



SOFTWARE UPDATES

Click Update, then wait for the download Progress to reach 100% before closing Updater.
The Elation Ethernet Updater can update up to 31 fixtures via connection to a PC.



SPECIFICATIONS

SOURCE

270W Cool White LED Engine

50,000 Hour Average LED Life*

*Test lab conditions. May vary depending on several factors including but not limited to: Environmental Conditions, Power/Voltage, Usage Patterns (On-Off Cycling), Control, and Dimming.

PHOTOMETRIC DATA

12,000 Total Lumen Output

CRI 72+

Zoom Range 6° - 48°

Beam Angle 7.3° - 41.5°

Field Angle 8.4° - 46.1°

EFFECTS

Motorized Zoom

3-Facet and Linear Rotating Prisms and Prism Macros

Full 360° Bi-Directional Rotating Animation Wheel

Frost Filter Hybrid Wash Effect

Motorized Zoom, Iris, Focus and Auto-Focus

High Speed Electronic Shutter and Strobe

Variable 16-Bit Dimming Curve Modes

Adjustable LED Refresh Rate Frequency and Gamma Brightness

Pan Angle: 540°, 630°

Tilt Angle: 255°

COLOR

7 Dichroic Colors + CTB

Full CMY Color Mixing

Linear CTO Color Correction

GOBOS

2 Gobo Wheels

6 Interchangeable Rotating / Indexing Gobos

9 Interchangeable Static-Stamped Metal Gobos

CONTROL / CONNECTIONS

(3) DMX Channel Modes (40 total channels)

6 Button Touch Control Panel

Full Color 180° Reversible LCD Menu Display

8 / 16 Bit Resolution Adjustable Movement

DMX, RDM, Art-Net, sACN Protocol Support

Elation's E-FLY™ Internal Wireless DMX Transceiver

Locking 5pin XLR DMX, RJ45 Ethernet, and Power

With Wired Digital Communication Network

SIZE / WEIGHT

Length: 16.4" (417mm)

Width: 11.2" (285mm)

Vertical Height: 25.4" (645mm)

Center Spacing: 20.6" (523mm)

Weight: 56.0 lbs. (25.4kg)

ELECTRICAL / THERMAL

AC 100-240V - 50/60Hz

470W Max Power Consumption

14°F to 113°F (-10°C to 45°C)

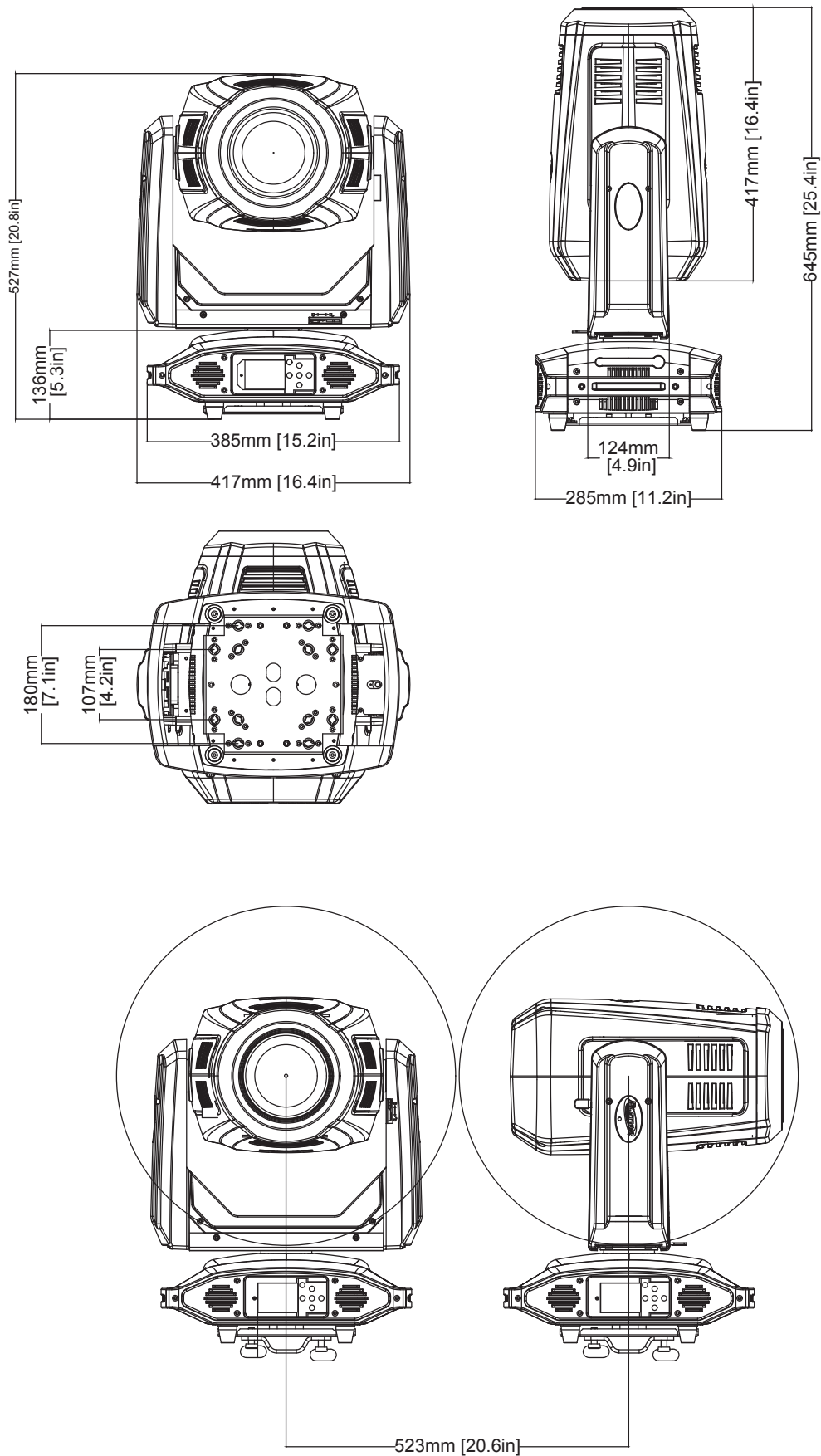
BTU/hr (+/- 10%) 1602.7

APPROVALS / RATINGS

CE | cETLus | IP20



DIMENSIONAL DRAWINGS



Drawings not shown to scale.

FCC STATEMENT

This device complies with Part 15 of the FCC rules. Operation is subject to the following two conditions: (1) this device may not cause harmful interference, and (2) this device must accept any interference received, including interference that may cause undesired operation.

FCC RADIO FREQUENCY INTERFERENCE WARNINGS & INSTRUCTIONS

This equipment has been tested and found to comply with the limits for a class B digital device, pursuant to part 15 of the FCC Rules. These limits are designed to provide reasonable protection against harmful interference in a residential installation. This device uses and can radiate radio frequency energy, and if not installed and used in accordance with the included instructions, may cause harmful interference to radio communications. However, there is no guarantee that interference will not occur in a particular installation. If this device does cause harmful interference to radio or television reception, which can be determined by turning the device off and on, the user is encouraged to try to correct the interference by one or more of the following methods:

- Reorient or relocate that device.
- Increase the separation between the device and the receiver.
- Connect the device and the radio receiver to electrical outlets on separate circuits.
- Consult the dealer or an experienced radio/TV technician for help.

Please note that the changes or modifications of this product that are not expressly approved by the party responsible for compliance could void the user's authority to operate the equipment.



This page intentionally left blank.

