

PIXEL TAPE 16IP



IP65 Outdoor Rated Flexible LED Pixel Tape

DATA SHEET



KEY FEATURES

IP65 Outdoor Rated Flexible LED Pixel Tape

8.9 foot (2.7m) Roll

(170) RGB Tri-Color SMD LED Pixels

(510) Total DMX Channels

Pixels Spaced on 0.62" (16mm) Centers

Cut Every 0.98" (25mm)

120° Viewing Angle

455 Lumens

Over 1 Billion Color Possibilities

The **PIXEL TAPE 16IP™** is an IP65, outdoor rated, 8.9 foot (2.7m) flexible LED pixel tape featuring (170) RGB SMD tri-color LED pixels (510 total DMX channels), producing over 1 billion color possibilities with a 120° viewing angle and is surface coated with an IP65 rated conformal coating. **PIXEL TAPE 16IP** can be powered and controlled using our PIXEL DRIVER 170, PIXEL DRIVER 1000IP or PIXEL DRIVER 4000 V3 control drivers.

SPECIFICATIONS

SOURCE:

(170 Pieces) APA102 / RGB

LED SPACING:

16mm Pixel Pitch

PHOTOMETRIC OUTPUT:

455 Lumens

COLOR:

Over 1 Billion Color Possibilities

CONTROL:

(510) DMX Channels

ICS APA102 Protocol

SIZE / WEIGHT:

Length: 107.2" (2,720mm) Roll

Width: 0.5" (12mm)

Vertical Height: 0.1" (3mm)

Weight: Under 1 lb. (0.2kg)

ELECTRICAL / THERMAL:

DC 24V

35W Max Power Consumption

APPROVALS / RATINGS:

CE

cETLus (PENDING)

IP65



Specifications are subject to change without notice ©Elation Professional 02/19/2024

Elation Professional USA | 6122 S. Eastern Ave. | Los Angeles, CA. 90040
323-582-3322 | 323-832-9142 fax | www.elationlighting.com | info@elationlighting.com

Elation Professional B.V. | Junostraat 2 | 6468 EW Kerkrade, The Netherlands
+31 45 546 85 66 | +31 45 546 85 96 fax | www.elationlighting.eu | info@elationlighting.eu

PIXEL TAPE 16IP

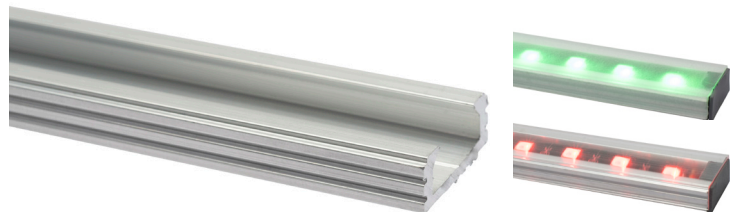


IP65 Outdoor Rated Flexible LED Pixel Tape

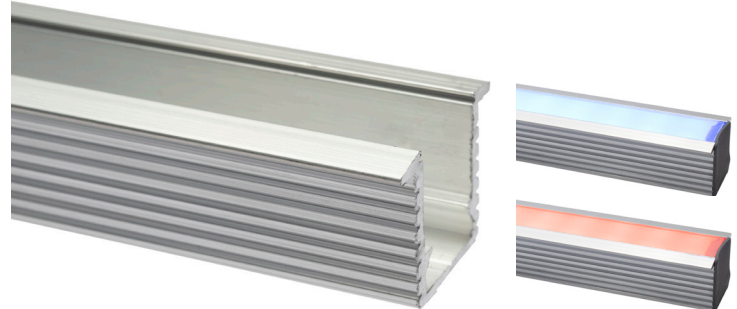
ORDERING INFORMATION

ORDER CODE	DESCRIPTION
PIX618	Pixel Tape 16IP
PIX600	Pixel Tape 40IP
PIX659	Pixel Driver 170 PSU
PIX124	PIX AD3 Adapter Cable
PIX170	Pixel Driver 170
PIX301	Pixel Driver 1000IP
PIX698	Pixel Driver 4000 V3
FCLP01	Flex Channel Low Profile
FCRF02	Flex Channel Recessed
FCRFML	Flex Channel Recessed Opal Lens
FCRFFL	Flex Channel Recessed Frosted Lens
FCTP03	Flex Channel Tall Profile
FCTP24	Flex Channel Tall Profile Opal Lens
FCTP12	Flex Channel Tall Profile Frosted Lens

*Flex Channel Low Profile (FCLP01)



*Flex Channel Recessed Profile (FCRF02)



*Flex Channel Tall Profile (FCTP03)



*Please note that the PIX-AD3 Adapter is an optional accessories for the Elation Pixel Tape 16, and is purchased separately.



Specifications are subject to change without notice ©Elation Professional 02/19/2024
Elation Professional USA | 6122 S. Eastern Ave. | Los Angeles, CA. 90040
323-582-3322 | 323-832-9142 fax | www.elationlighting.com | info@elationlighting.com

Elation Professional B.V. | Junostraat 2 | 6468 EW Kerkrade, The Netherlands
+31 45 546 85 66 | +31 45 546 85 96 fax | www.elationlighting.eu | info@elationlighting.eu

PIXEL TAPE 16IP



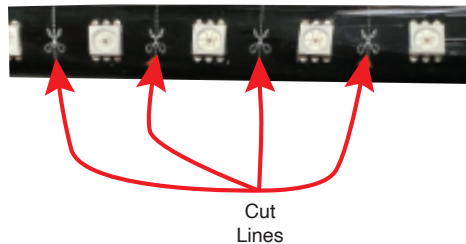
IP65 Outdoor Rated Flexible LED Pixel Tape

CUTTING INSTRUCTIONS

IMPORTANT: Do not cut the tape anywhere other than the specified cut lines, copper pads, or soldered contact points! Be sure to cut cleanly through the outer silicone layer while following the indicated cut line as closely as possible.

CUTTING TAPE DOWN TO A DESIRED LENGTH

The Pixel Tape series are designed to be trimmed to the desired length at clearly indicated cut lines, which are marked with a scissor logo. The Pixel Tape 16IP features a cut line every 0.62 inches (16mm). Remember, these designated "cut" lines are intended solely for trimming the tape to your desired length.



CUTTING AND EXTENDING TAPE

The tape can also be cut and extend as needed. When extending Pixel Tape 16IP tape, cuts can be made through the center of either the copper pads or soldered pads, as indicated below. These pads are spaced at intervals of 10.7 inches (272mm).



Copper
Pads



Soldered
Contact Pads

CONNECTING TAPE

Once the desired cuts have been made, connections must be established for the new segments. The copper or soldered contact pads that have been cut can now serve as connection points for linking additional tape segments, or for attaching feed wires.

1. Once the cut in the tape has been made, carefully use a sharp knife to carefully remove the outer silicone layer around the contact pads. Gradually remove small portions of silicone, being careful not to cut into the tape itself.
2. Use a soldering iron to solder feed or link cables to the contact pads. Try to minimize the time the tape is exposed to the heat from the soldering process, in order to avoid the risk of potential damage to nearby components.
3. To protect against water infiltration, employ Dow Corning® 799, 1199, or an equivalent silicone sealant. Apply the sealant such that it forms a comprehensive seal around the exposed tape, connections, and cables. Ideally, this sealing process should be performed once the Pixel Tape 16IP is securely fixed in place, but it is also possible to apply the sealant before installation. Allow ample time for the sealant to fully set before disturbing the tape.

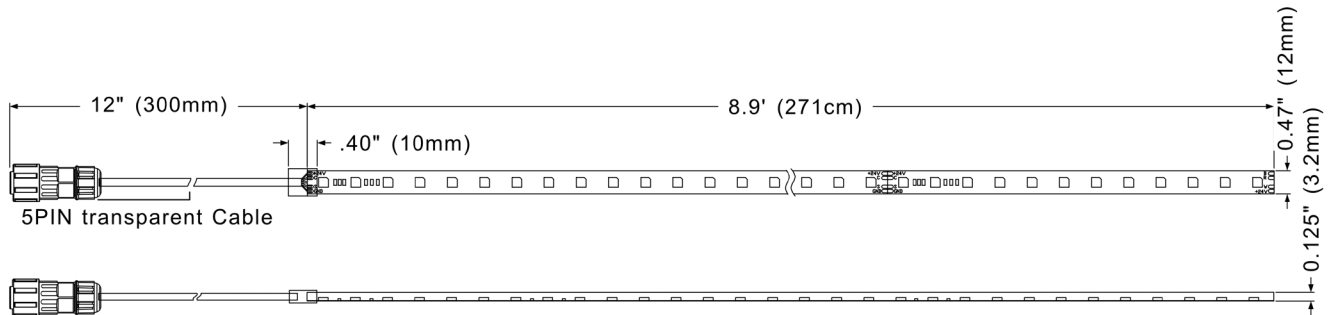


PIXEL TAPE 16IP

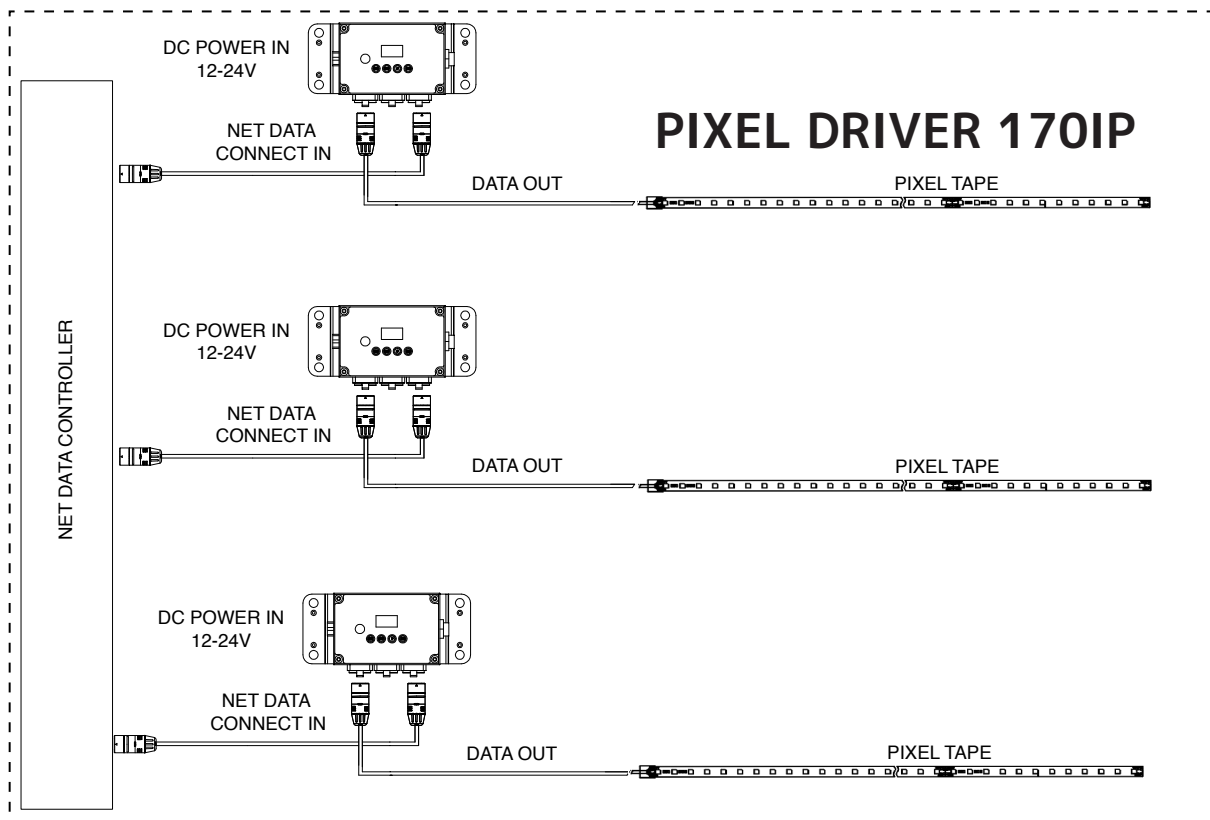
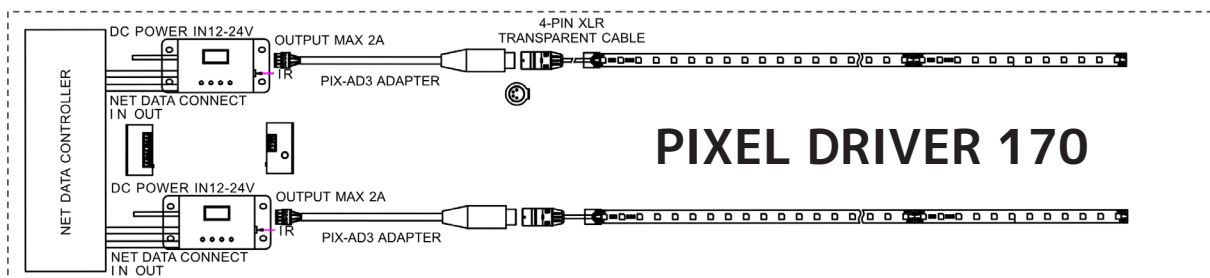


IP65 Outdoor Rated Flexible LED Pixel Tape

DIMENSIONAL DRAWINGS



CONNECTION DIAGRAMS

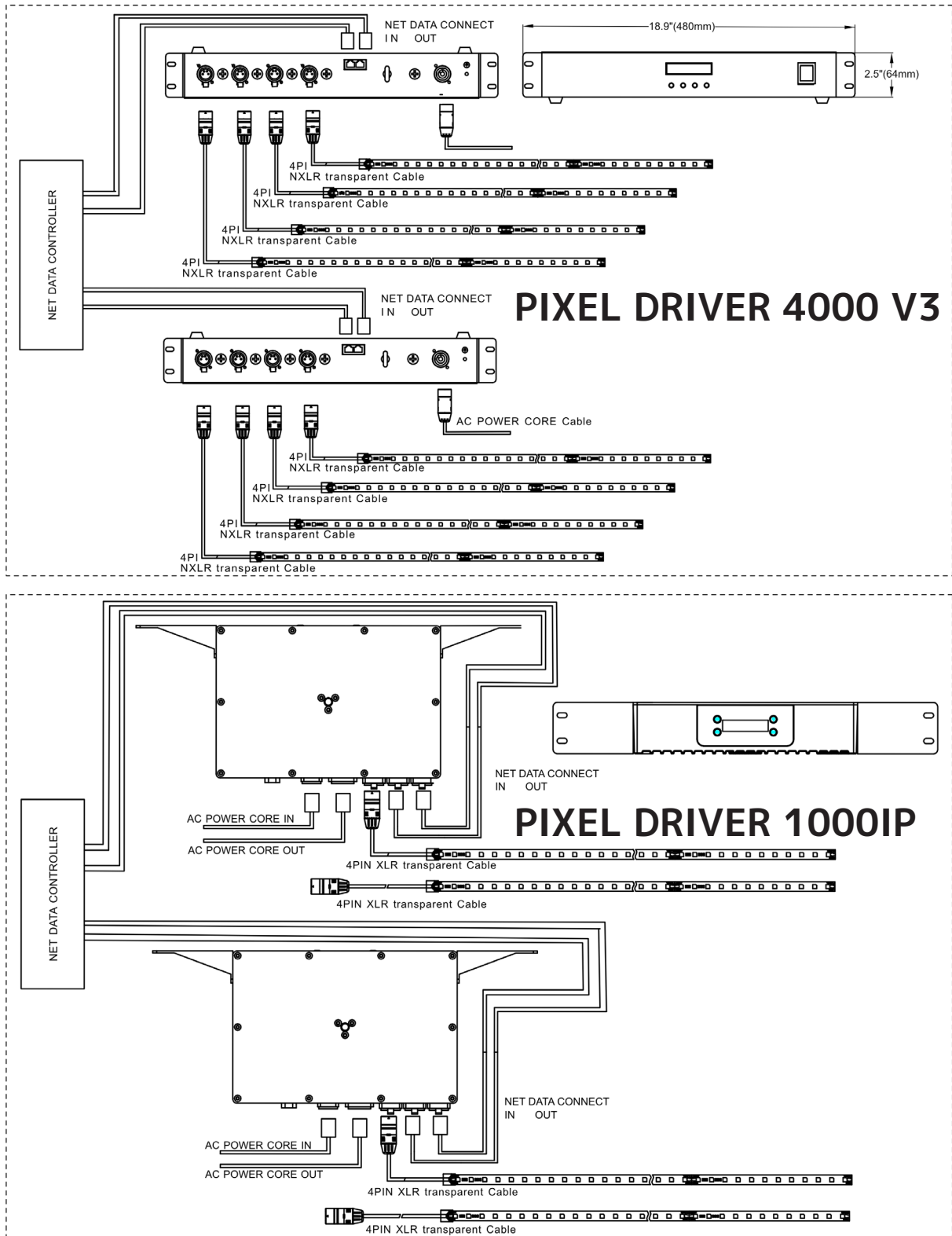


PIXEL TAPE 16IP



IP65 Outdoor Rated Flexible LED Pixel Tape

CONNECTION DIAGRAMS



Specifications are subject to change without notice ©Elation Professional 02/19/2024
Elation Professional USA | 6122 S. Eastern Ave. | Los Angeles, CA. 90040
323-582-3322 | 323-832-9142 fax | www.elationlighting.com | info@elationlighting.com

Elation Professional B.V. | Junostraat 2 | 6468 EW Kerkrade, The Netherlands
+31 45 546 85 66 | +31 45 546 85 96 fax | www.elationlighting.eu | info@elationlighting.eu