

# PIXEL TAPE 40IP



IP65 Outdoor Rated Flexible LED Pixel Tape

**DATA SHEET**



## KEY FEATURES

IP65 Outdoor Rated Flexible LED Pixel Tape  
22.3 foot (6.8m) Roll  
(170) RGB Tri-Color SMD LED Pixels  
(510) Total DMX Channels  
Pixels Spaced on 1.57" (40mm) Centers  
Cut Every 2.44" (62mm)  
120° Viewing Angle  
475 Lumens  
Over 1 Billion Color Possibilities

The **PIXEL TAPE 40IP™** is an outdoor rated 22.3 foot (6.8m) flexible LED pixel tape featuring (170) RGB SMD tri-color LED pixels (510 total DMX channels) spaced on 1.6" (40mm) centers, producing over 1 billion color possibilities with a 120° viewing angle and is surface coated with an IP65 conformal coating. **PIXEL TAPE 40IP** can be powered and controlled using our PIXEL DRIVER 170, PIXEL DRIVER 1000IP or PIXEL DRIVER 4000 V3 control drivers.

## SPECIFICATIONS

### SOURCE

(170) RGB SMD LED Pixels  
40mm Pixel Pitch

### PHOTOMETRIC OUTPUT

475 Lumens

### COLOR

Over 1 Billion Color Possibilities

### CONTROL

(510) DMX Channels  
ICS APA102 Protocol

### SIZE / WEIGHT

Length: 22.3 foot (6.8m) Roll  
Width: 0.57" (14.5mm)  
Vertical Height: 0.125" (3.2mm)  
Weight: Under 1 lb. (0.35kg)

### ELECTRICAL / THERMAL

DC 24V  
35W Max Power Consumption

### APPROVALS / RATINGS

CE  
cETLus (PENDING)  
IP65



Specifications are subject to change without notice ©Elation Professional 02/19/2024

Elation Professional USA | 6122 S. Eastern Ave. | Los Angeles, CA. 90040  
323-582-3322 | 323-832-9142 fax | [www.elationlighting.com](http://www.elationlighting.com) | [info@elationlighting.com](mailto:info@elationlighting.com)

Elation Professional B.V. | Junostraat 2 | 6468 EW Kerkrade, The Netherlands  
+31 45 546 85 66 | +31 45 546 85 96 fax | [www.elationlighting.eu](http://www.elationlighting.eu) | [info@elationlighting.eu](mailto:info@elationlighting.eu)

# PIXEL TAPE 40IP

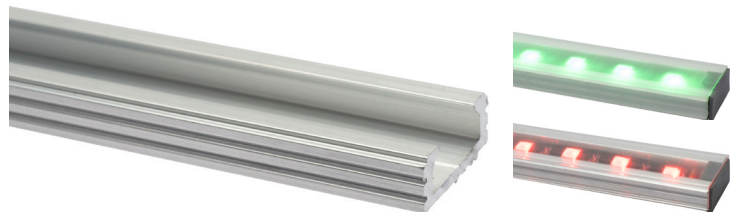


IP65 Outdoor Rated Flexible LED Pixel Tape

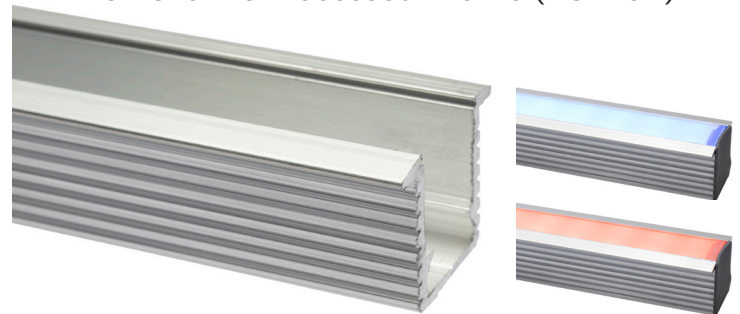
## ORDERING INFORMATION

ORDER CODE	DESCRIPTION
PIX618	Pixel Tape 16IP
PIX600	Pixel Tape 40IP
PIX659	Pixel Driver 170 PSU
PIX124	PIX AD3 Adapter Cable
PIX170	Pixel Driver 170
PIX301	Pixel Driver 1000IP
PIX698	Pixel Driver 4000 V3
FCLP01	Flex Channel Low Profile
FCRF02	Flex Channel Recessed
FCRFML	Flex Channel Recessed Opal Lens
FCRFFL	Flex Channel Recessed Frosted Lens
FCTP03	Flex Channel Tall Profile
FCTP24	Flex Channel Tall Profile Opal Lens
FCTP12	Flex Channel Tall Profile Frosted Lens

\*Flex Channel Low Profile (FCLP01)



\*Flex Channel Recessed Profile (FCRF02)



\*Flex Channel Tall Profile (FCTP03)



\*Please note that the PIX-AD3 Adapter is an optional accessories for the Elation Pixel Tape 16, and is purchased separately.



Specifications are subject to change without notice ©Elation Professional 02/19/2024  
Elation Professional USA | 6122 S. Eastern Ave. | Los Angeles, CA. 90040  
323-582-3322 | 323-832-9142 fax | [www.elationlighting.com](http://www.elationlighting.com) | [info@elationlighting.com](mailto:info@elationlighting.com)

Elation Professional B.V. | Junostraat 2 | 6468 EW Kerkrade, The Netherlands  
+31 45 546 85 66 | +31 45 546 85 96 fax | [www.elationlighting.eu](http://www.elationlighting.eu) | [info@elationlighting.eu](mailto:info@elationlighting.eu)

# PIXEL TAPE 40IP



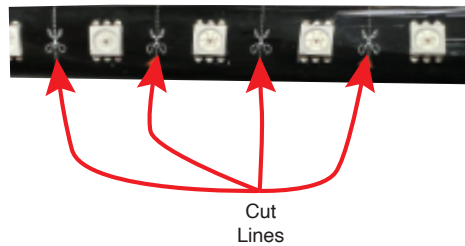
IP65 Outdoor Rated Flexible LED Pixel Tape

## CUTTING INSTRUCTIONS

**IMPORTANT: Do not cut the tape anywhere other than the specified cut lines or soldered contact points!** Be sure to cut cleanly through the outer silicone layer while following the indicated cut line as closely as possible.

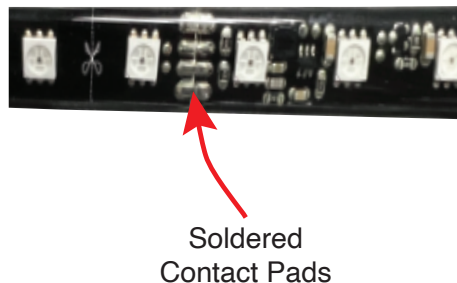
### CUTTING TAPE DOWN TO A DESIRED LENGTH

The Pixel Tape series are designed to be trimmed to the desired length at clearly indicated cut lines, which are marked with a scissor logo. The Pixel Tape 40IP features a cut line every 2.44 inches (62mm). Remember, these designated "cut" lines are intended solely for trimming the tape to your desired length.



### CUTTING AND EXTENDING TAPE

The tape can also be cut and extend as needed. When extending Pixel Tape 40IP tape, cuts can be made through the center of the soldered pads, as indicated below. These pads are spaced at intervals of 26.7 inches (677mm).



### CONNECTING TAPE

Once the desired cuts have been made, connections must be established for the new segments. The soldered contact pads that have been cut can now serve as connection points for linking additional tape segments, or for attaching feed wires.

1. Once the cut in the tape has been made, carefully use a sharp knife to carefully remove the outer silicone layer around the contact pads. Gradually remove small portions of silicone, being careful not to cut into the tape itself.
2. Use a soldering iron to solder feed or link cables to the contact pads. Try to minimize the time the tape is exposed to the heat from the soldering process, in order to avoid the risk of potential damage to nearby components.
3. To protect against water infiltration, employ Dow Corning® 799, 1199, or an equivalent silicone sealant. Apply the sealant such that it forms a comprehensive seal around the exposed tape, connections, and cables. Ideally, this sealing process should be performed once the Pixel Tape 40IP is securely fixed in place, but it is also possible to apply the sealant before installation. Allow ample time for the sealant to fully set before disturbing the tape.

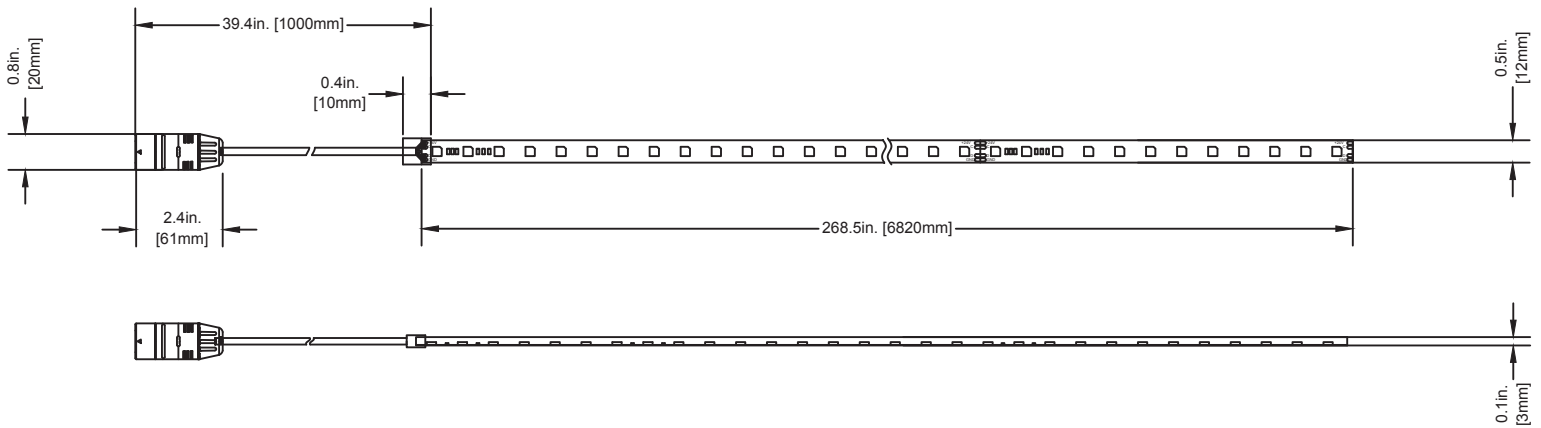


# PIXEL TAPE 40IP

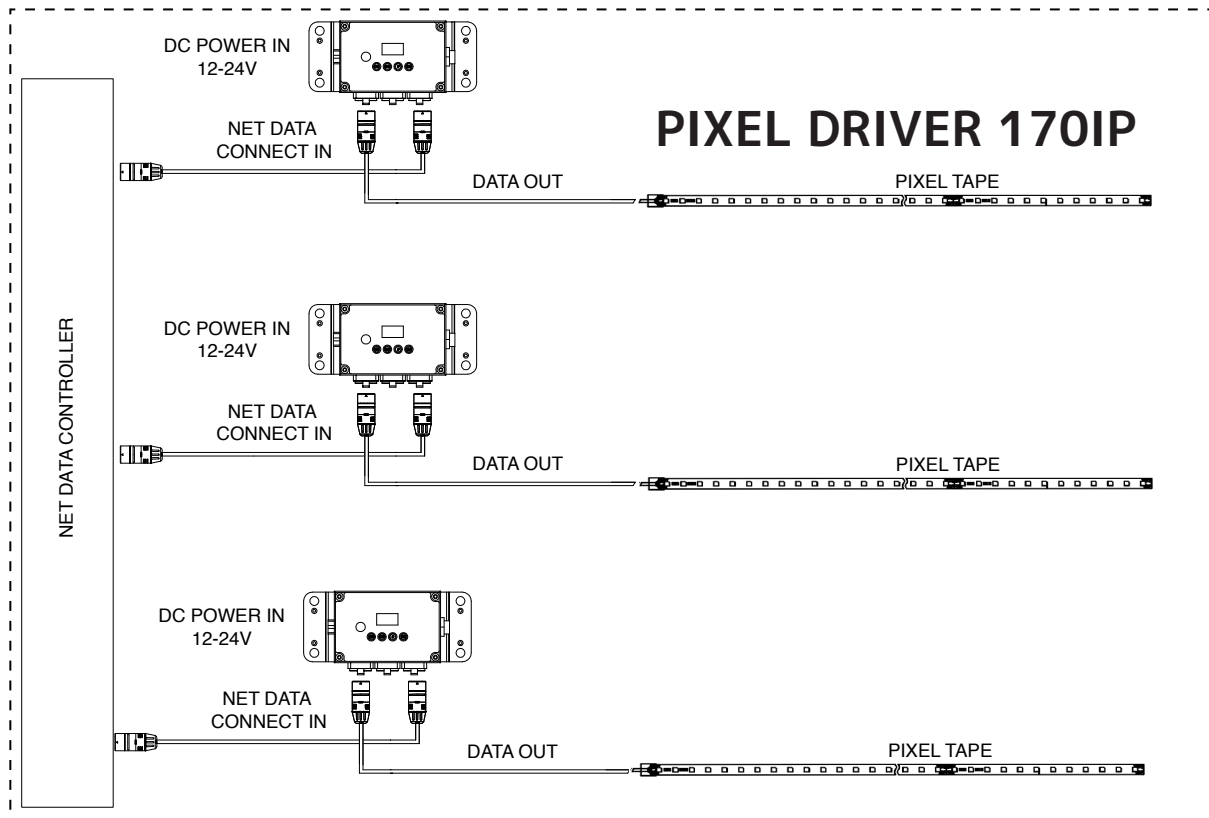
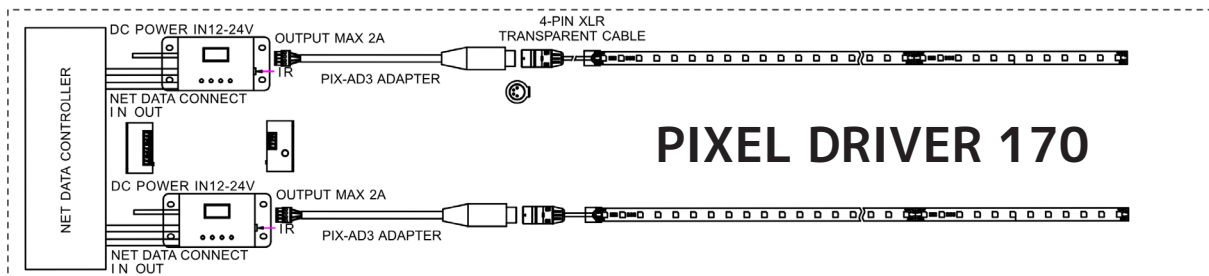


IP65 Outdoor Rated Flexible LED Pixel Tape

## DIMENSIONAL DRAWINGS



## CONNECTION DIAGRAMS



Specifications are subject to change without notice ©Elation Professional 02/19/2024  
Elation Professional USA | 6122 S. Eastern Ave. | Los Angeles, CA. 90040  
323-582-3322 | 323-832-9142 fax | [www.elationlighting.com](http://www.elationlighting.com) | [info@elationlighting.com](mailto:info@elationlighting.com)

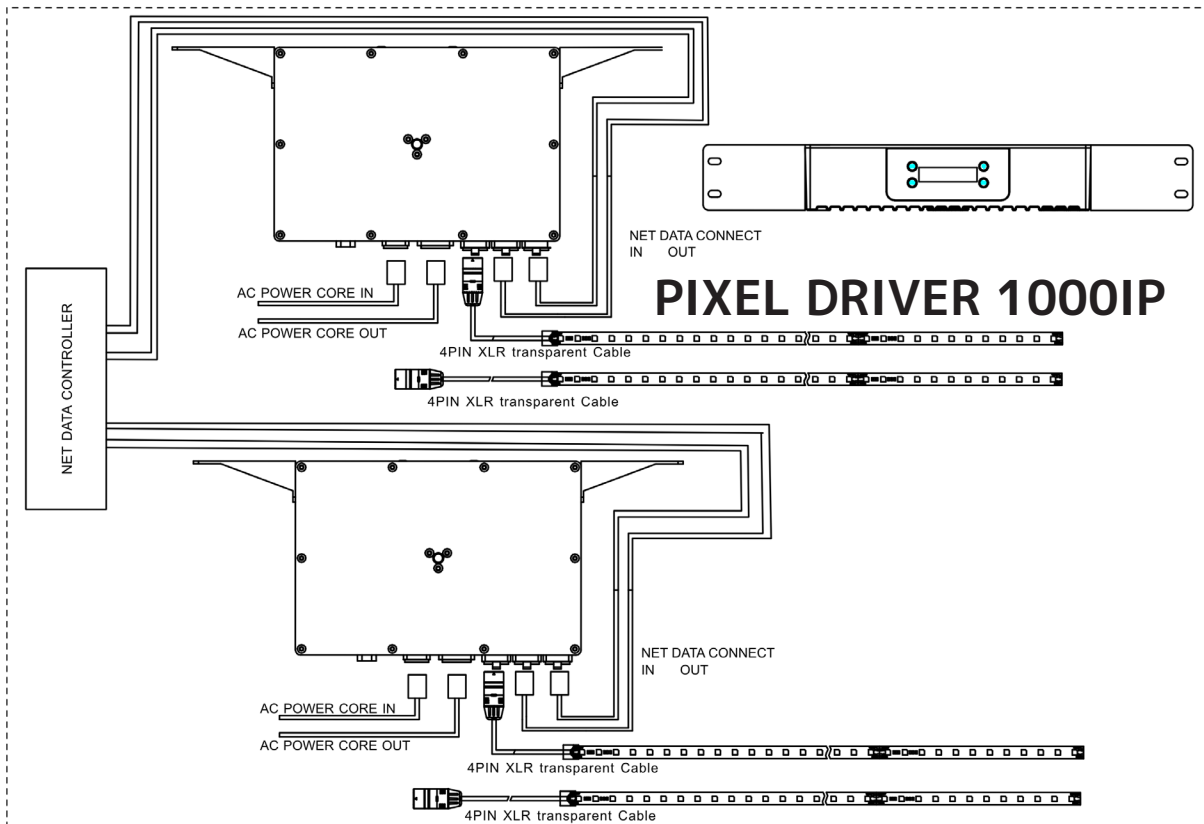
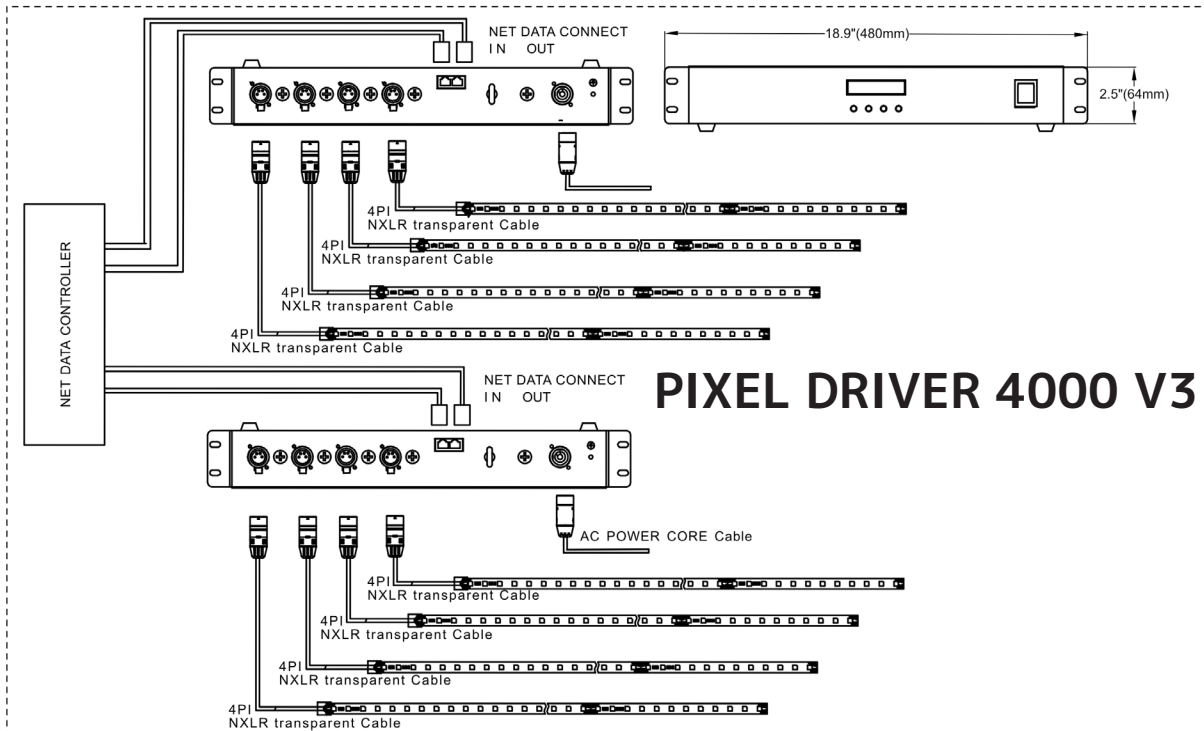
Elation Professional B.V. | Junostraat 2 | 6468 EW Kerkrade, The Netherlands  
+31 45 546 85 66 | +31 45 546 85 96 fax | [www.elationlighting.eu](http://www.elationlighting.eu) | [info@elationlighting.eu](mailto:info@elationlighting.eu)

# PIXEL TAPE 40IP



IP65 Outdoor Rated Flexible LED Pixel Tape

## CONNECTION DIAGRAMS



Specifications are subject to change without notice ©Elation Professional 02/19/2024

Elation Professional USA | 6122 S. Eastern Ave. | Los Angeles, CA. 90040  
323-582-3322 | 323-832-9142 fax | [www.elationlighting.com](http://www.elationlighting.com) | [info@elationlighting.com](mailto:info@elationlighting.com)

Elation Professional B.V. | Junostraat 2 | 6468 EW Kerkrade, The Netherlands  
+31 45 546 85 66 | +31 45 546 85 96 fax | [www.elationlighting.eu](http://www.elationlighting.eu) | [info@elationlighting.eu](mailto:info@elationlighting.eu)