



Emulation Touch™

SKU# (see product SKU table below)

The new Emulation Touch™ devices are designed to be used exclusively with the Cuety™ application, the new generation lighting controller that transforms your iPad™ into a powerful lighting console. The easy-to-use Cuety™ application offers full support for moving heads, LEDs, conventional lighting and DMX controlled special effects. The Emulation Touch™ devices contain the powerful engine that runs your show, calculates fade times and renders dynamic FXs. The Cuety™ application is your user-interface that uses the mobility and multi-touch display of your iPad™.

Two versions of the Emulation Touch™ are available, both provide an RJ45 ethernet port and an optically isolated DMX-512 port. Emulation Touch-1™ is designed for entertainment lighting and is very affordable, and the Emulation Touch-2™ is designed for fixed installations and offers extra protocols like OSC, UDP, TCP and HTTP. These protocols enable you to connect to a wide range of 3rd party control systems and show controllers, as well as apps like TouchOSC.



FEATURES

Designed for use with Cuety™ Application

Transforms iPad™ into Powerful Lighting Console

Powerful Engine Controls Shows, Fade Times, and FXs

Full DMX Support for LEDs and Conventional Lighting

RJ45 Ethernet and Optically Isolated DMX-512 Ports

Supports DMX, Art-Net, UDP, OSC and RS-232

OSC, UDP, TCP, HTTP Support on Emulation Touch-2™

Secure by using a Kensington Style Laptop Lock

DIN Rail Mounting (hardware not included)

Specifications are preliminary and subject to change without notice ©Elation Professional 07/18/16

Elation Professional USA - Corporate Headquarters | 6122 S. Eastern Ave. | Los Angeles, CA. 90040
323-582-3322 | 323-832-9142 fax | www.elationlighting.com | info@elationlighting.com

Elation Professional B.V. | Junostraat 2 | 6468 EW Kerkrade, The Netherlands
+31 45 546 85 66 | +31 45 546 85 96 fax | www.elationlighting.eu | info@elationlighting.eu

PRODUCT SPECIFICATIONS

CONTROL / CONNECTIONS

3pin DMX Output
RJ45 Ethernet Port

SIZE / WEIGHT

Length: 5.39" (137mm)
Width: 2.99" (76mm)
Vertical Height: 1.61" (41mm)
Weight: 0.45 lbs. (0.2 kg)

ELECTRICAL / THERMAL

9-12V DC 500mA
12W Max Power Consumption
14°F (-10°C) to 113°F (45°C)

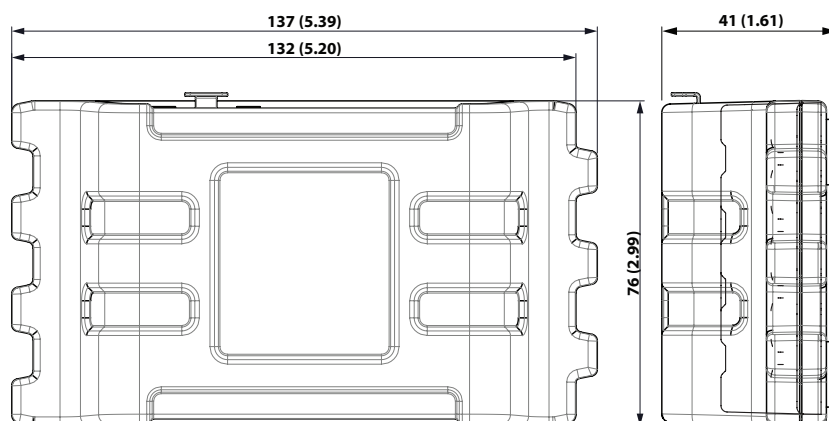
APPROVALS / RATINGS



INCLUDED ACCESSORIES

- (1) Quick Start Guide
- (1) External 100-240V 50/60Hz Power Supply
- (1) 6.5 ft. (2m) RJ45 Ethernet Cable

DIMENSIONAL DIAGRAMS



mm (inch)

DIN RAIL MOUNTING (HOLDER NOT INCLUDED)

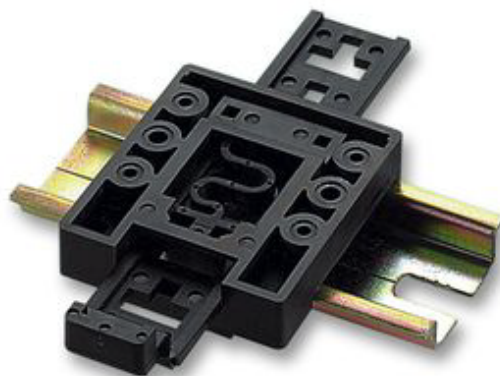
Requires a DIN Rail Holder TSH 35 from Bopla Product # 22035000 - (Not included)

This holder and other similar versions available from:

Farnell / Newark (order code 4189991)

Conrad (order code 539775 – 89)

Distrelec (order code 300060)



PRODUCT SKUs

ORDER CODE	ITEM
EMU120	Emulation Touch-1™
EMU135	Emulation Touch-2™ (OSC, TCP, UDP and HTTP protocol support)

OPTIONAL ACCESSORIES

ORDER CODE	ITEM
AC5PDMX5PRO	5 ft. (1.5m) 5pin PRO DMX Cable
	Additional cable lengths available